

EXHIBIT PREPARED BY WGI, INC.

REVISIONS:			DRAWING INFORMATION:		
Nr:	DATE:	DESCRIPTION:	BY:	DATE:	
				5/01/20	
				SCALE:	1" = 40'
				DRAWN BY:	J. QUIGLEY
				CHECKED BY:	J. SULLIVAN
				CAD FILE:	20-8957P-00_CSX
				AERIAL DATE:	2019

NOTE:
MAP WAS COMPILED USING PALM BEACH COUNTY GIS GEOGRAPHIC DATA, SURVEYS, LWDD QC DEEDS, PLATS, PLANIMETRIC MAPS, AND OTHER PUBLIC DOMAIN RECORDS. WHILE EVERY EFFORT HAS BEEN MADE TO PRESERVE THE INTEGRITY OF THE DATA, THE ACCURACY VARIES AND SHOULD NOT BE RELIED UPON FOR ANYTHING OTHER THAN REFERENCE.

MAP DISCLAIMER:
LAKE WORTH DRAINAGE DISTRICT MAKES NO WARRANTIES AND/OR REPRESENTATIONS WITH RESPECT TO SUCH INFORMATION AND FURTHER EXPRESSLY DISCLAIMS ANY AND ALL WARRANTIES AND/OR REPRESENTATIONS REGARDING THE USABILITY, ACCURACY, COMPLETENESS, VALIDITY AND RELIABILITY OF SUCH INFORMATION.

MAP SHOWN HEREON IS FOR INFORMATIONAL PURPOSES ONLY AND DOES NOT REPRESENT A SURVEY

LAKE WORTH DRAINAGE DISTRICT
13081 MILITARY TRAIL
DELRAY BEACH, FLORIDA 33484-1105
PHONE (561) 498-5363 • FAX (561) 495-9694
WWW.LWDD.NET



CANAL REHABILITATION PROJECT
LWDD L-28 CANAL RIGHT-OF-WAY
FROM MILITARY TRAIL ROAD TO I-95

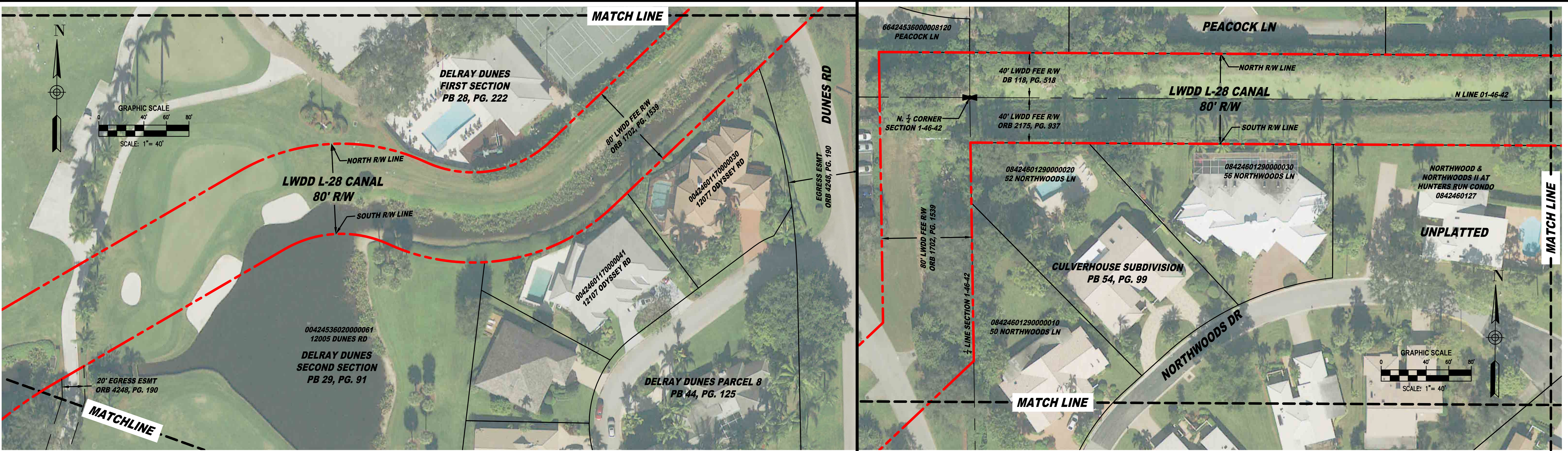
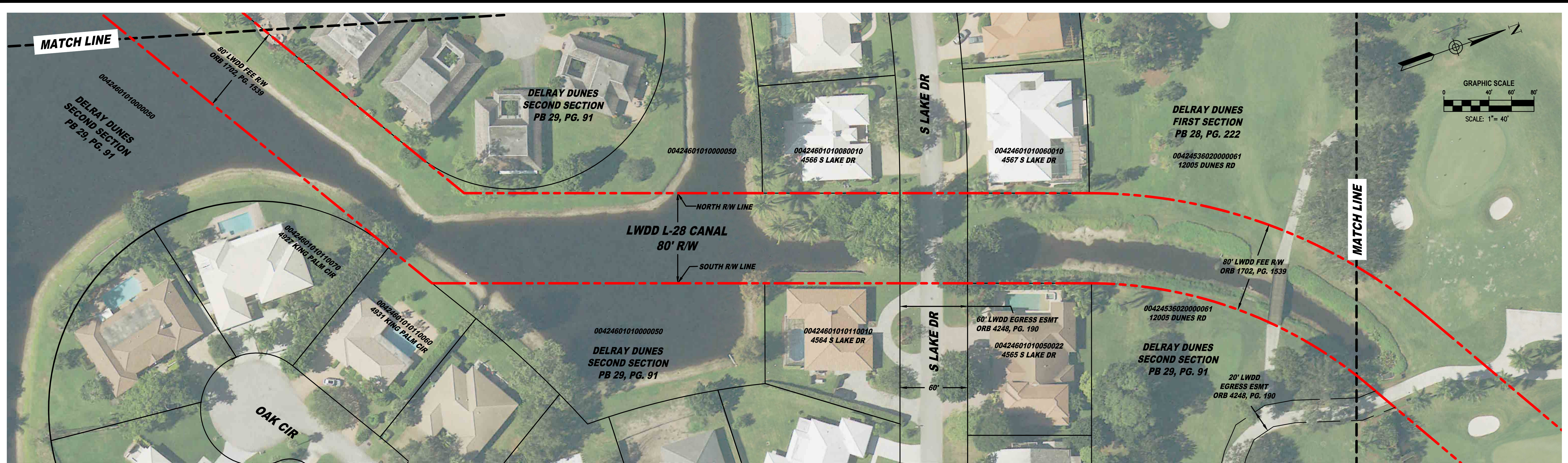


EXHIBIT PREPARED BY WGI, INC.

REVISIONS:				DRAWING INFORMATION:			
Nr:	DATE:	DESCRIPTION:	BY:	DATE:	SCALE:	DRAWN BY:	CHECKED BY:
				5/01/20	1" = 40'	J. QUIGLEY	J. SULLIVAN

NOTE:
MAP WAS COMPILED USING PALM BEACH COUNTY GIS GEOGRAPHIC DATA, SURVEYS, LWDD QC DEEDS, PLATS, PLANIMETRIC MAPS, AND OTHER PUBLIC DOMAIN RECORDS. WHILE EVERY EFFORT HAS BEEN MADE TO PRESERVE THE INTEGRITY OF THE DATA, THE ACCURACY VARIES AND SHOULD NOT BE RELIED UPON FOR ANYTHING OTHER THAN REFERENCE.

MAP DISCLAIMER:
LAKE WORTH DRAINAGE DISTRICT MAKES NO WARRANTIES AND/OR REPRESENTATIONS WITH RESPECT TO SUCH INFORMATION AND FURTHER EXPRESSLY DISCLAIMS ANY AND ALL WARRANTIES AND/OR REPRESENTATIONS REGARDING THE USABILITY, ACCURACY, COMPLETENESS, VALIDITY AND RELIABILITY OF SUCH INFORMATION.

MAP SHOWN HEREON IS FOR INFORMATIONAL PURPOSES ONLY AND DOES NOT REPRESENT A SURVEY

LAKE WORTH DRAINAGE DISTRICT
13081 MILITARY TRAIL
DELRAY BEACH, FLORIDA 33484-1105
PHONE (561) 498-5363 • FAX (561) 495-9694
WWW.LWDD.NET

CANAL REHABILITATION PROJECT
LWDD L-28 CANAL RIGHT-OF-WAY
FROM MILITARY TRAIL ROAD TO I-95

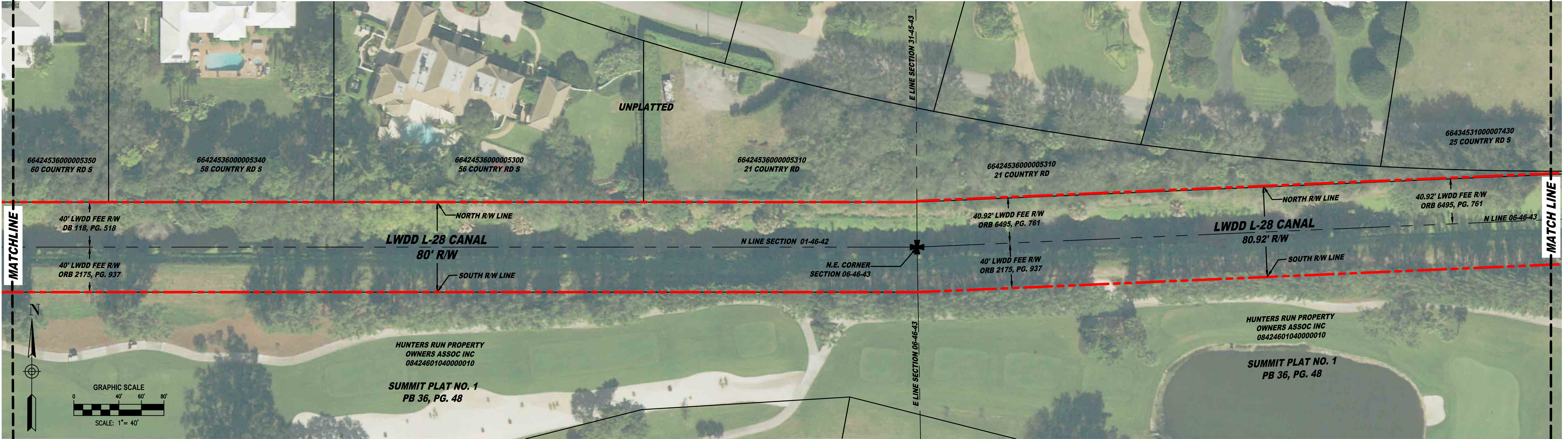
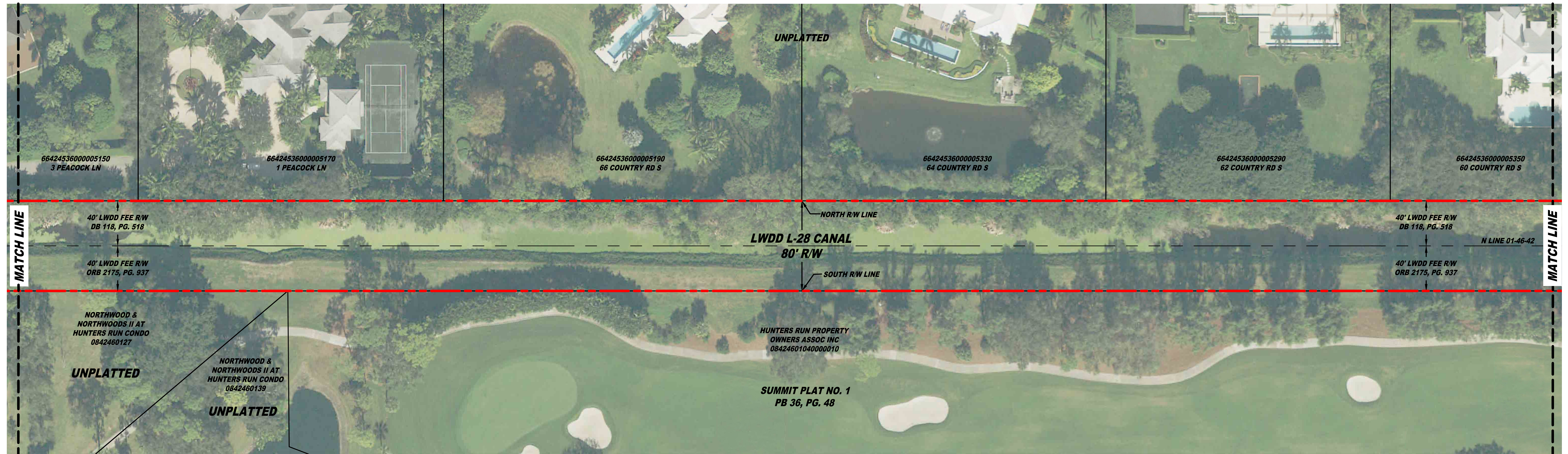


EXHIBIT PREPARED BY WGI, INC.

REVISIONS:			DRAWING INFORMATION:	
No.	DATE:	DESCRIPTION:	BY:	DATE:
				5/01/20
				SCALE: 1" = 40'
				DRAWN BY: J. QUIGLEY
				CHECKED BY: J. SULLIVAN
				CAD FILE: 20-8957P-00_CSW
				AERIAL DATE: 2019

NOTE:
MAP WAS COMPILED USING PALM BEACH COUNTY GIS GEOGRAPHIC DATA, SURVEYS, LWDD QC DEEDS, PLATS, PLANIMETRIC MAPS, AND OTHER PUBLIC DOMAIN RECORDS. WHILE EVERY EFFORT HAS BEEN MADE TO PRESERVE THE INTEGRITY OF THE DATA, THE ACCURACY VARIES AND SHOULD NOT BE RELIED UPON FOR ANYTHING OTHER THAN REFERENCE.

MAP DISCLAIMER:
LAKE WORTH DRAINAGE DISTRICT MAKES NO WARRANTIES AND/OR REPRESENTATIONS WITH RESPECT TO SUCH INFORMATION AND FURTHER EXPRESSLY DISCLAIMS ANY AND ALL WARRANTIES AND/OR REPRESENTATIONS REGARDING THE USABILITY, ACCURACY, COMPLETENESS, VALIDITY AND RELIABILITY OF SUCH INFORMATION.

MAP SHOWN HEREON IS FOR INFORMATIONAL PURPOSES ONLY AND DOES NOT REPRESENT A SURVEY

LAKE WORTH DRAINAGE DISTRICT
13081 MILITARY TRAIL
DELRAY BEACH, FLORIDA 33484-1105
PHONE (561) 498-5363 • FAX (561) 495-9694
WWW.LWDD.NET



CANAL REHABILITATION PROJECT
LWDD L-28 CANAL RIGHT-OF-WAY
FROM MILITARY TRAIL ROAD TO I-95

SHEET
3
OF 7
LWDD PROJECT No:
20-8957P.00

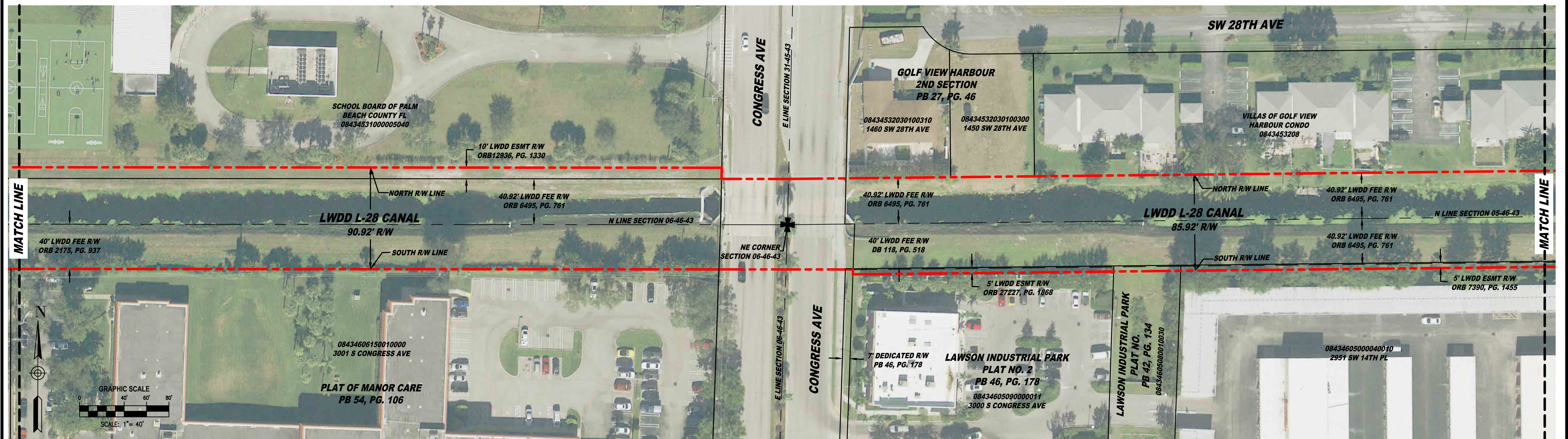
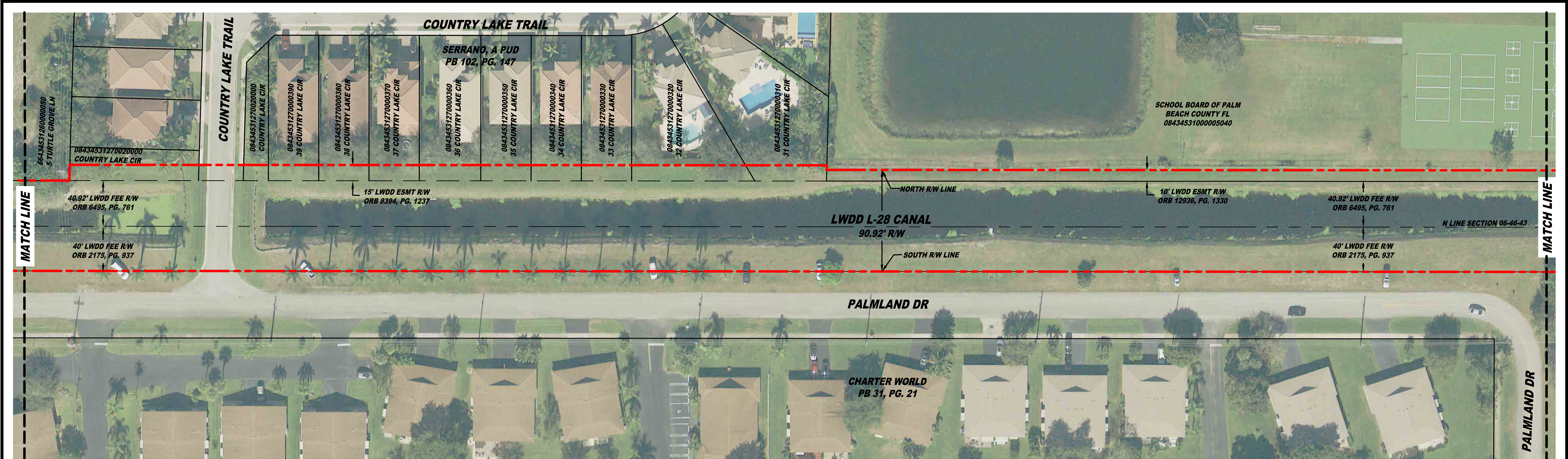



EXHIBIT PREPARED BY WGI, INC.

REVISIONS:				DRAWING INFORMATION:		<p>NOTE:</p> <p>MAP WAS COMPILED USING PALM BEACH COUNTY GIS GEOGRAPHIC DATA, SURVEYS, LWDD QC DEEDS, PLATS, PLANIMETRIC MAPS, AND OTHER PUBLIC DOMAIN RECORDS. WHILE EVERY EFFORT HAS BEEN MADE TO PRESERVE THE INTEGRITY OF THE DATA, THE ACCURACY VARIES AND SHOULD NOT BE RELIED UPON FOR ANYTHING OTHER THAN REFERENCE.</p> <p>MAP DISCLAIMER:</p> <p>LAKE WORTH DRAINAGE DISTRICT MAKES NO WARRANTIES AND/OR REPRESENTATIONS WITH RESPECT TO SUCH INFORMATION AND FURTHER EXPRESSLY DISCLAIMS ANY AND ALL WARRANTIES AND/OR REPRESENTATIONS REGARDING THE USABILITY, ACCURACY, COMPLETENESS, VALIDITY AND RELIABILITY OF SUCH INFORMATION.</p> <p>MAP SHOWN HEREON IS FOR INFORMATIONAL PURPOSES ONLY AND DOES NOT REPRESENT A SURVEY</p>
Nr:	DATE:	DESCRIPTION:	BY:	DATE:	5/01/20	
				SCALE:	1" = 40'	
				DRAWN BY:	J. QUIGLEY	
				CHECKED BY:	J. SULLIVAN	
				CAD FILE:	20-8957P-00_CSW	
				AERIAL DATE:	2019	
I:\540\CAD_projects\RW maps\L28\08957P-00\L28_Military_05.dwg 6/16/2020 9:11 AM						

<p>LAKE WORTH DRAINAGE DISTRICT</p> <p>13081 MILITARY TRAIL</p> <p>DELRAY BEACH, FLORIDA 33484-1105</p> <p>PHONE (561) 498-5363 • FAX (561) 495-9694</p> <p>WWW.LWDD.NET</p>			<p>CANAL REHABILITATION PROJECT</p>		<p>SHEET</p> <p>5</p> <p>OF: 7</p>
<p>LWDD L-28 CANAL RIGHT-OF-WAY</p> <p>FROM MILITARY TRAIL ROAD TO I-95</p>					
<p>LWDD PROJECT Nr:</p> <p>20-8957P.00</p>					