

EXHIBIT PREPARED BY WGI, INC.

REVISIONS:			DRAWING INFORMATION:		
No.	DATE:	DESCRIPTION:	BY:	DATE:	DESCRIPTION:
				5/11/20	
					SCALE: 1" = 40'
					DRAWN BY: J. QUIGLEY
					CHECKED BY: J. SULLIVAN
					CAD FILE: 20-8957P-02_CSW
					AERIAL DATE: 2019

NOTE:  
 MAP WAS COMPILED USING PALM BEACH COUNTY GIS GEOGRAPHIC DATA, SURVEYS, LWDD CC DEEDS, PLATS, PLANIMETRIC MAPS, AND OTHER PUBLIC DOMAIN RECORDS. WHILE EVERY EFFORT HAS BEEN MADE TO PRESERVE THE INTEGRITY OF THE DATA, THE ACCURACY VARIES AND SHOULD NOT BE RELIED UPON FOR ANYTHING OTHER THAN REFERENCE.

MAP DISCLAIMER:  
 LAKE WORTH DRAINAGE DISTRICT MAKES NO WARRANTIES AND/OR REPRESENTATIONS WITH RESPECT TO SUCH INFORMATION AND FURTHER EXPRESSLY DISCLAIMS ANY AND ALL WARRANTIES AND/OR REPRESENTATIONS REGARDING THE USABILITY, ACCURACY, COMPLETENESS, VALIDITY AND RELIABILITY OF SUCH INFORMATION.

**MAP SHOWN HEREON IS FOR INFORMATIONAL PURPOSES ONLY AND DOES NOT REPRESENT A SURVEY**

**LAKE WORTH DRAINAGE DISTRICT**  
 13081 MILITARY TRAIL  
 DELRAY BEACH, FLORIDA 33484-1105  
 PHONE (561) 498-5363 • FAX (561) 495-9694  
 WWW.LWDD.NET



**CANAL REHABILITATION PROJECT**  
**LWDD L-28 CANAL RIGHT-OF-WAY FROM MILITARY TRAIL ROAD TO I-95**

**SHEET 5 OF 7**  
 LWDD PROJECT No: 20-8957P.00

I:\540\CAD\_projects\RW maps\L28\08957P-00-L28\_Military\_05.dwg 6/16/2020 9:11 AM

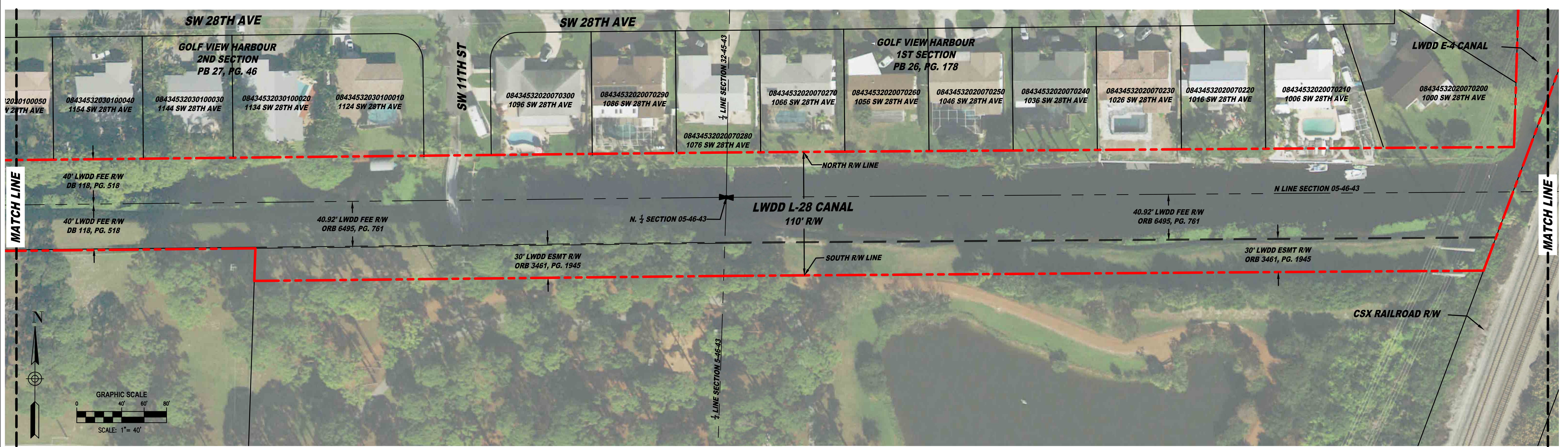
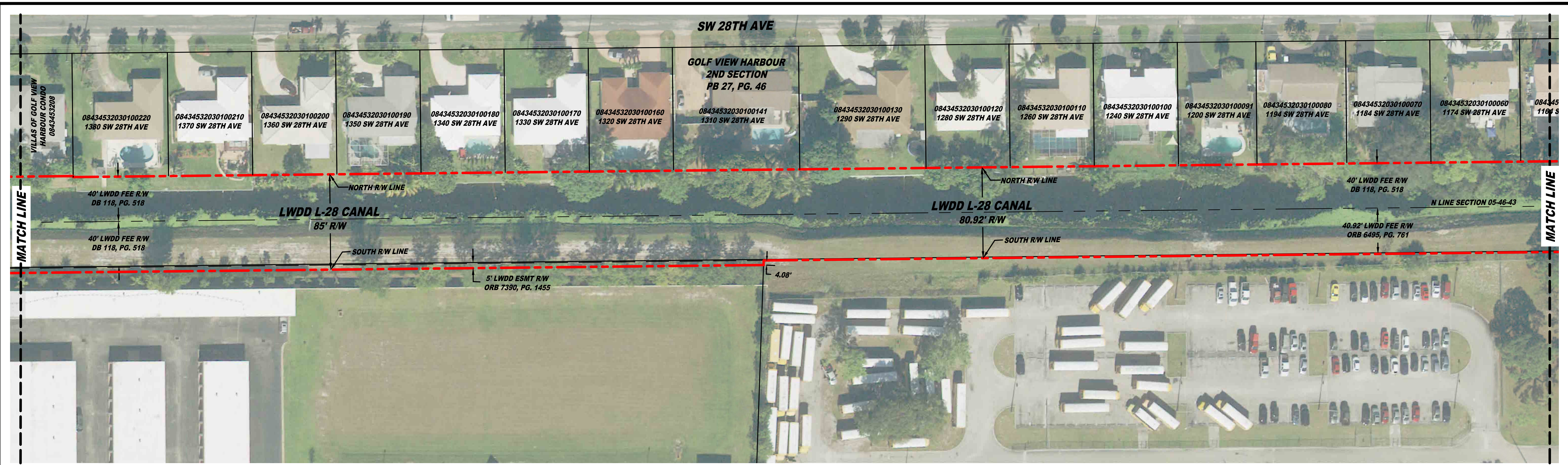


EXHIBIT PREPARED BY WGI, INC.

REVISIONS:			DRAWING INFORMATION:		
No.	DATE:	DESCRIPTION:	DATE:	BY:	SCALE:
			5/01/20		1" = 40'

NOTE:  
 MAP WAS COMPILED USING PALM BEACH COUNTY GIS GEOGRAPHIC DATA, SURVEYS, LWDD OC DEEDS, PLATS, PLANIMETRIC MAPS, AND OTHER PUBLIC DOMAIN RECORDS. WHILE EVERY EFFORT HAS BEEN MADE TO PRESERVE THE INTEGRITY OF THE DATA, THE ACCURACY VARIES AND SHOULD NOT BE RELIED UPON FOR ANYTHING OTHER THAN REFERENCE.

MAP DISCLAIMER:  
 LAKE WORTH DRAINAGE DISTRICT MAKES NO WARRANTIES AND/OR REPRESENTATIONS WITH RESPECT TO SUCH INFORMATION AND FURTHER EXPRESSLY DISCLAIMS ANY AND ALL WARRANTIES AND/OR REPRESENTATIONS REGARDING THE USABILITY, ACCURACY, COMPLETENESS, VALIDITY AND RELIABILITY OF SUCH INFORMATION.

MAP SHOWN HEREON IS FOR INFORMATIONAL PURPOSES ONLY AND DOES NOT REPRESENT A SURVEY

**LAKE WORTH DRAINAGE DISTRICT**  
 13081 MILITARY TRAIL  
 DELRAY BEACH, FLORIDA 33484-1105  
 PHONE (561) 498-5363 • FAX (561) 495-9694  
 WWW.LWDD.NET



**CANAL REHABILITATION PROJECT**  
**LWDD L-28 CANAL RIGHT-OF-WAY**  
**FROM MILITARY TRAIL ROAD TO I-95**

SHEET **6** OF **7**  
 LWDD PROJECT No:  
**20-8957P.00**

I:\540\CAD\_projects\RW\_maps\L28\08957P\_00\L28\_Military\_05\08957P\_00\L28\_Military\_05.dwg 6/16/2020 9:11 AM

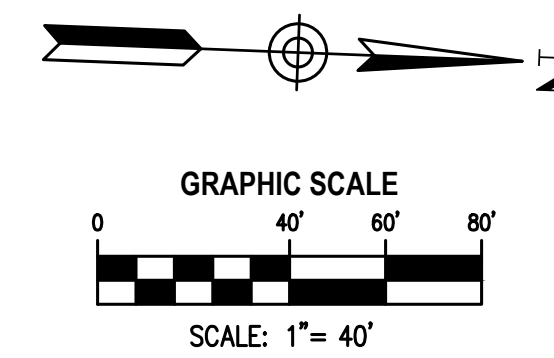
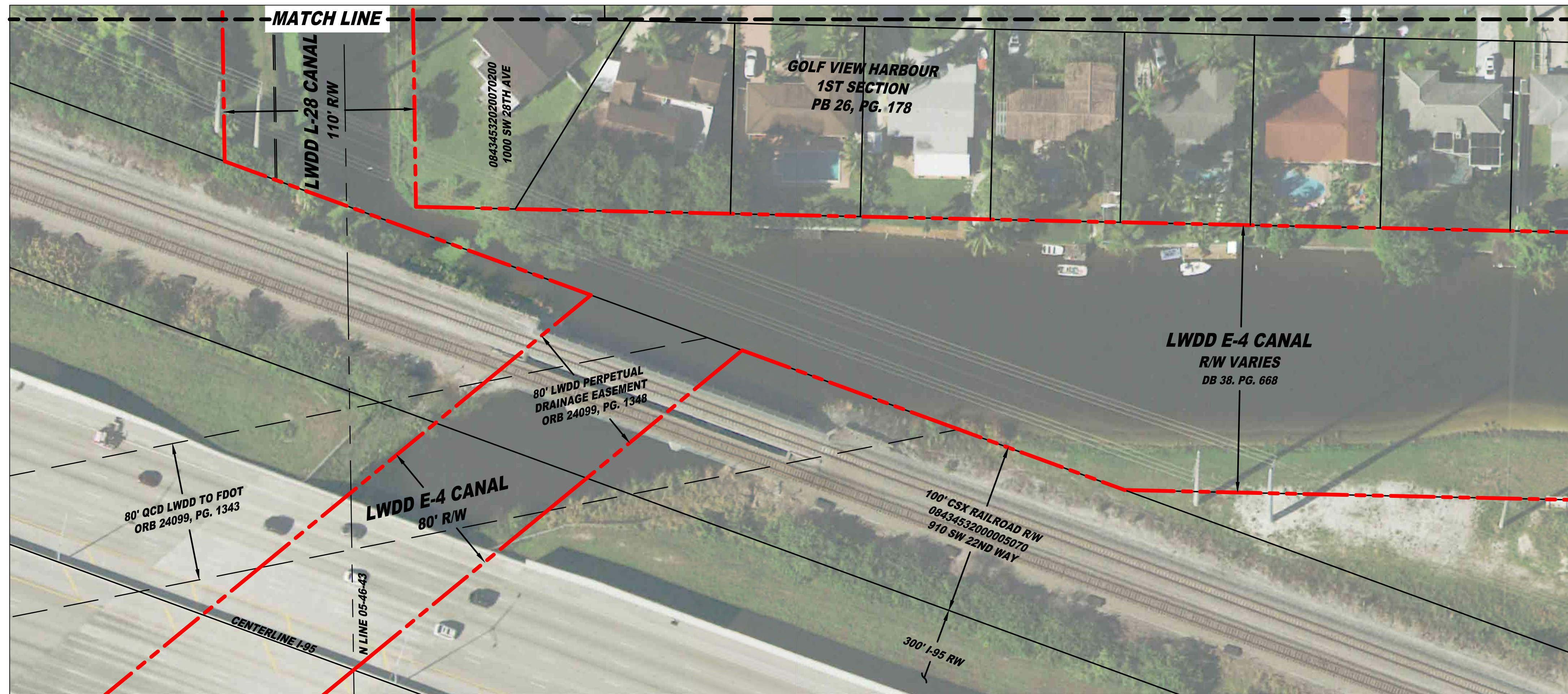


EXHIBIT PREPARED BY WGI, INC.

REVISIONS:			DRAWING INFORMATION:		
No.	DATE:	DESCRIPTION:	BY:	DATE:	
				5/01/20	
				SCALE:	1" = 40'
				DRAWN BY:	J. QUIGLEY
				CHECKED BY:	J. SULLIVAN
				CAD FILE:	20-8957P_00_CSW
				AERIAL DATE:	2019

**NOTE:**  
 MAP WAS COMPILED USING PALM BEACH COUNTY GIS GEOGRAPHIC DATA, SURVEYS, LWDD OC DEEDS, PLATS, PLANIMETRIC MAPS, AND OTHER PUBLIC DOMAIN RECORDS. WHILE EVERY EFFORT HAS BEEN MADE TO PRESERVE THE INTEGRITY OF THE DATA, THE ACCURACY VARIES AND SHOULD NOT BE RELIED UPON FOR ANYTHING OTHER THAN REFERENCE.

**MAP DISCLAIMER:**  
 LAKE WORTH DRAINAGE DISTRICT MAKES NO WARRANTIES AND/OR REPRESENTATIONS WITH RESPECT TO SUCH INFORMATION AND FURTHER EXPRESSLY DISCLAIMS ANY AND ALL WARRANTIES AND/OR REPRESENTATIONS REGARDING THE USABILITY, ACCURACY, COMPLETENESS, VALIDITY AND RELIABILITY OF SUCH INFORMATION.

**MAP SHOWN HEREON IS FOR INFORMATIONAL PURPOSES ONLY AND DOES NOT REPRESENT A SURVEY**

**LAKE WORTH DRAINAGE DISTRICT**  
 13081 MILITARY TRAIL  
 DELRAY BEACH, FLORIDA 33484-1105  
 PHONE (561) 498-5363 • FAX (561) 495-9694  
 WWW.LWDD.NET



**CANAL REHABILITATION PROJECT**  
**LWDD L-28 CANAL RIGHT-OF-WAY**  
**FROM MILITARY TRAIL ROAD TO I-95**

**SHEET**  
**7**  
 OF: **7**  
 LWDD PROJECT No:  
**20-8957P.00**

I:\540\CAD\_projects\RW\_maps\L28\08957P\_00\_L28\_Military\_05\08957P\_00\_L28\_Military\_05.dwg 6/16/2020 9:11 AM