

EXHIBIT PREPARED BY WGI, INC.

REVISIONS:			DRAWING INFORMATION:	
Nr:	DATE:	DESCRIPTION:	DATE:	04/06/2020
			SCALE:	1" = 40'
			DRAWN BY:	J. QUIGLEY
			CHECKED BY:	J. SULLIVAN
			CAD FILE:	20-0955P_03_L-25
			AERIAL DATE:	2019

NOTE:
MAP WAS COMPILED USING PALM BEACH COUNTY GIS GEOGRAPHIC DATA, SURVEYS, LWDD QC DEEDS, PLATS, PLANIMETRIC MAPS, AND OTHER PUBLIC DOMAIN RECORDS. WHILE EVERY EFFORT HAS BEEN MADE TO PRESERVE THE INTEGRITY OF THE DATA, THE ACCURACY VARIES AND SHOULD NOT BE RELIED UPON FOR ANYTHING OTHER THAN REFERENCE.

MAP DISCLAIMER:
LAKE WORTH DRAINAGE DISTRICT MAKES NO WARRANTIES AND/OR REPRESENTATIONS WITH RESPECT TO SUCH INFORMATION AND FURTHER EXPRESSLY DISCLAIMS ANY AND ALL WARRANTIES AND/OR REPRESENTATIONS REGARDING THE USABILITY, ACCURACY, COMPLETENESS, VALIDITY AND RELIABILITY OF SUCH INFORMATION.

MAP SHOWN HEREON IS FOR INFORMATIONAL PURPOSES ONLY AND DOES NOT REPRESENT A SURVEY

LAKE WORTH DRAINAGE DISTRICT
13081 MILITARY TRAIL
DELRAY BEACH, FLORIDA 33484-1105
PHONE (561) 498-5363 • FAX (561) 495-9694
WWW.LWDD.NET



CANAL REHABILITATION PROJECT
**LWDD L-25 CANAL RIGHT-OF-WAY FROM
LWDD E-3 CANAL TO LAWRENCE RD**

1
OF: **3**

LWDD PROJECT Nr:
20-9955P.03

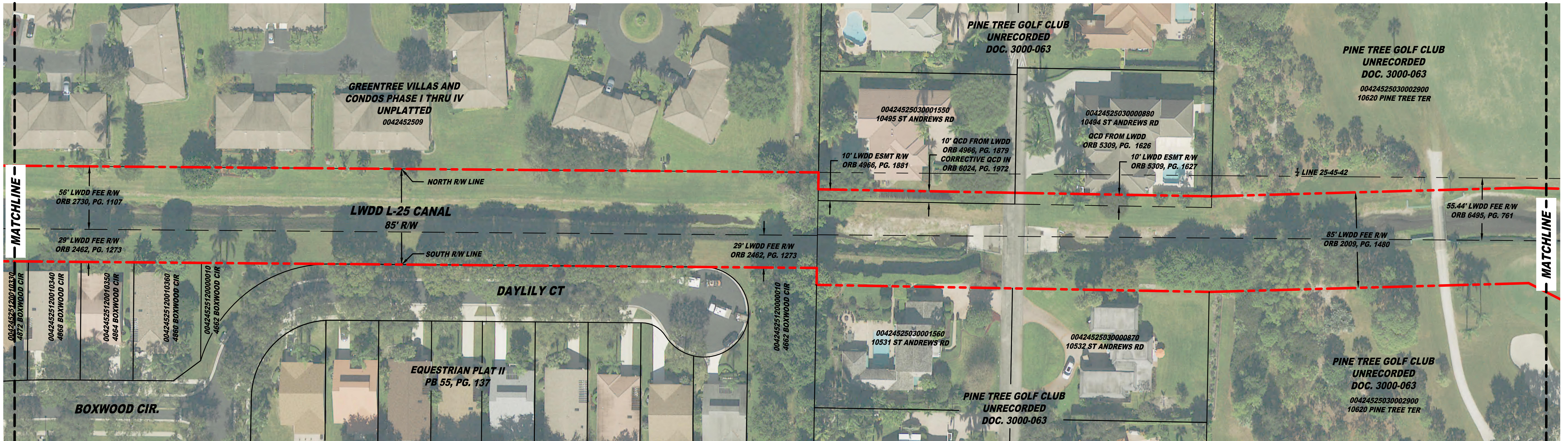


EXHIBIT PREPARED BY WGI, INC.

REVISIONS:				DRAWING INFORMATION:		NOTE: MAP WAS COMPILED USING PALM BEACH COUNTY GIS GEOGRAPHIC DATA, SURVEYS, LWDD QC DEEDS, PLATS, PLANIMETRIC MAPS, AND OTHER PUBLIC DOMAIN RECORDS. WHILE EVERY EFFORT HAS BEEN MADE TO PRESERVE THE INTEGRITY OF THE DATA, THE ACCURACY VARIES AND SHOULD NOT BE RELIED UPON FOR ANYTHING OTHER THAN REFERENCE. MAP DISCLAIMER: LAKE WORTH DRAINAGE DISTRICT MAKES NO WARRANTIES AND/OR REPRESENTATIONS WITH RESPECT TO SUCH INFORMATION AND FURTHER EXPRESSLY DISCLAIMS ANY AND ALL WARRANTIES AND/OR REPRESENTATIONS REGARDING THE USABILITY, ACCURACY, COMPLETENESS, VALIDITY AND RELIABILITY OF SUCH INFORMATION. MAP SHOWN HEREON IS FOR INFORMATIONAL PURPOSES ONLY AND DOES NOT REPRESENT A SURVEY
No:	DATE:	DESCRIPTION:	BY:	DATE:	04/06/2020	
				SCALE:	1" = 40'	
				DRAWN BY:	J. QUIGLEY	
				CHECKED BY:	J. SULLIVAN	
				CAD FILE:	20-9955P_03_L-25	
				AERIAL DATE:	2019	
\\LWDD-WVP-FS2010rg5001540\CAD_projects\RW\mapset\25010955P03-L25_E3_Lawrence.dwg				33 PM		

<

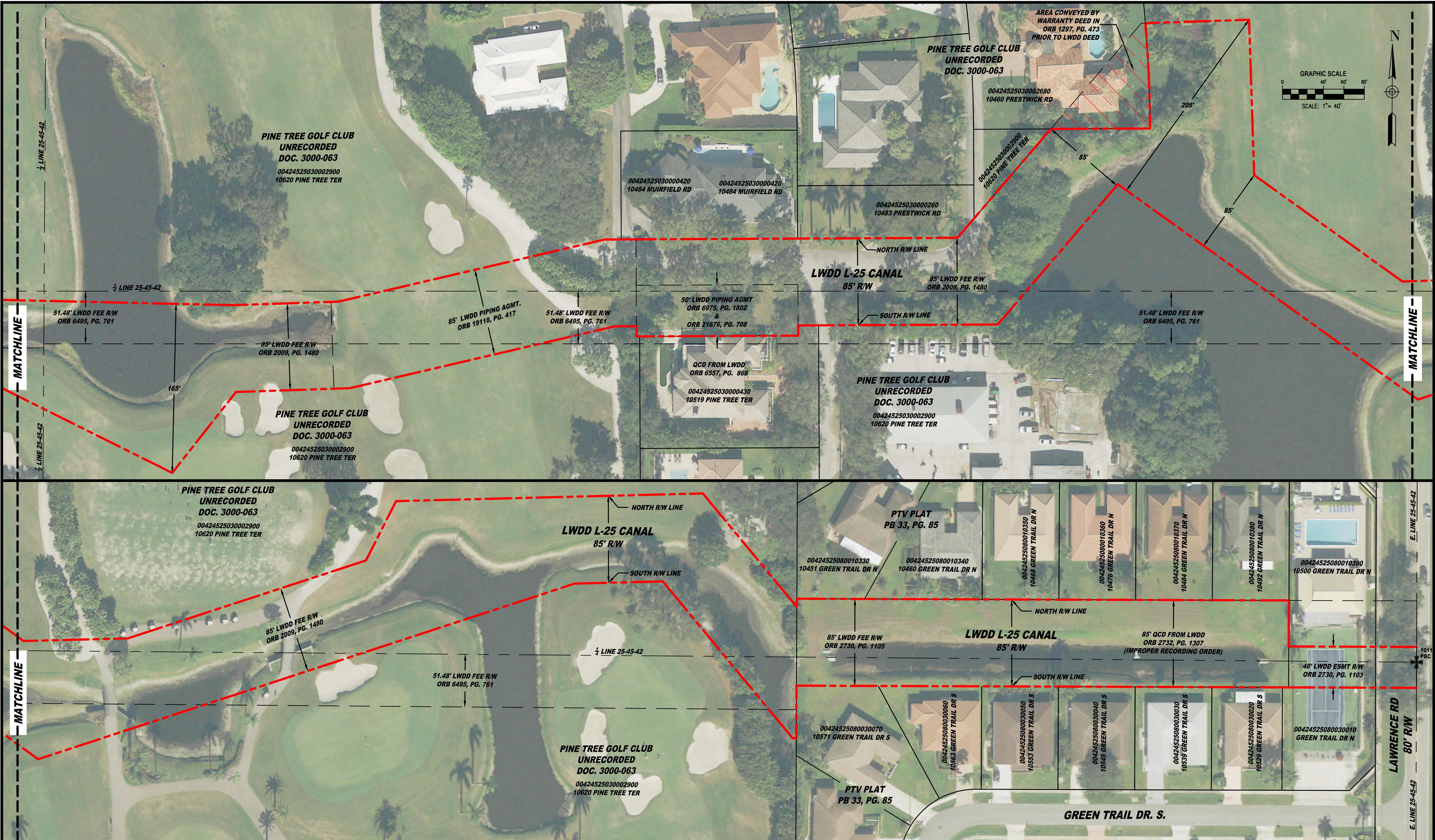


EXHIBIT PREPARED BY WGI, INC.

REVISIONS:				DRAWING INFORMATION:			
No.	DATE:	DESCRIPTION:	BY:	DATE:	04/06/2020		
				SCALE:	1" = 40'		
				DRAWN BY:	J. QUIGLEY		
				CHECKED BY:	J. SULLIVAN		
				CAD FILE:	20-9955P_03_L-25		
				AERIAL DATE:	2019		

NOTE:
MAP WAS COMPILED USING PALM BEACH COUNTY GIS GEOGRAPHIC DATA, SURVEYS, LWDD QC DEEDS, PLATS, PLANIMETRIC MAPS, AND OTHER PUBLIC DOMAIN RECORDS. WHILE EVERY EFFORT HAS BEEN MADE TO PRESERVE THE INTEGRITY OF THE DATA, THE ACCURACY VARIES AND SHOULD NOT BE RELIED UPON FOR ANYTHING OTHER THAN REFERENCE.

MAP DISCLAIMER:
LAKE WORTH DRAINAGE DISTRICT MAKES NO WARRANTIES AND/OR REPRESENTATIONS WITH RESPECT TO SUCH INFORMATION AND FURTHER EXPRESSLY DISCLAIMS ANY AND ALL WARRANTIES AND/OR REPRESENTATIONS REGARDING THE USABILITY, ACCURACY, COMPLETENESS, VALIDITY AND RELIABILITY OF SUCH INFORMATION.

MAP SHOWN HEREON IS FOR INFORMATIONAL PURPOSES ONLY AND DOES NOT REPRESENT A SURVEY

LAKE WORTH DRAINAGE DISTRICT
13081 MILITARY TRAIL
DELRAY BEACH, FLORIDA 33484-1105
PHONE (561) 498-5363 • FAX (561) 495-9694
WWW.LWDD.NET



CANAL REHABILITATION PROJECT
LWDD L-25 CANAL RIGHT-OF-WAY FROM
LWDD E-3 CANAL TO LAWRENCE RD