

Annual Report to District Landowners ***FY2025 Activities & Accomplishments***

Tommy B. Strowd, P.E., Executive Director
Annual Landowners' Meeting
January 7, 2026



2025 – LWDD History Over 110 Years



A Century of Flow: The Story of the Lake Worth Drainage District

Founding & Growth (1915 - 1950s)

1915: A District is Born
Created by court decree to reclaim over 200 square miles of swampland.

1930s: Navigating the Great Depression

1940s-50s: Supporting an Agricultural Boom
Focused on maintaining canals to support the region's 'Winter Vegetable Capital' reputation.

Modernization & Urbanization (1960s - Present)

1960s-80s: The Shift to Urban Service
Focus shifted to stormwater runoff management and canal relocation for urban development.

2010s: Engaging in Regional Water Solutions
Key partner in large-scale projects like the C-5t Reservoir, addressing water supply and restoration.

2015-Present: Restoring Flood Control Capacity
Launched a massive Canal Rehabilitation Program, clearing over 180 miles of vegetation for flood protection.



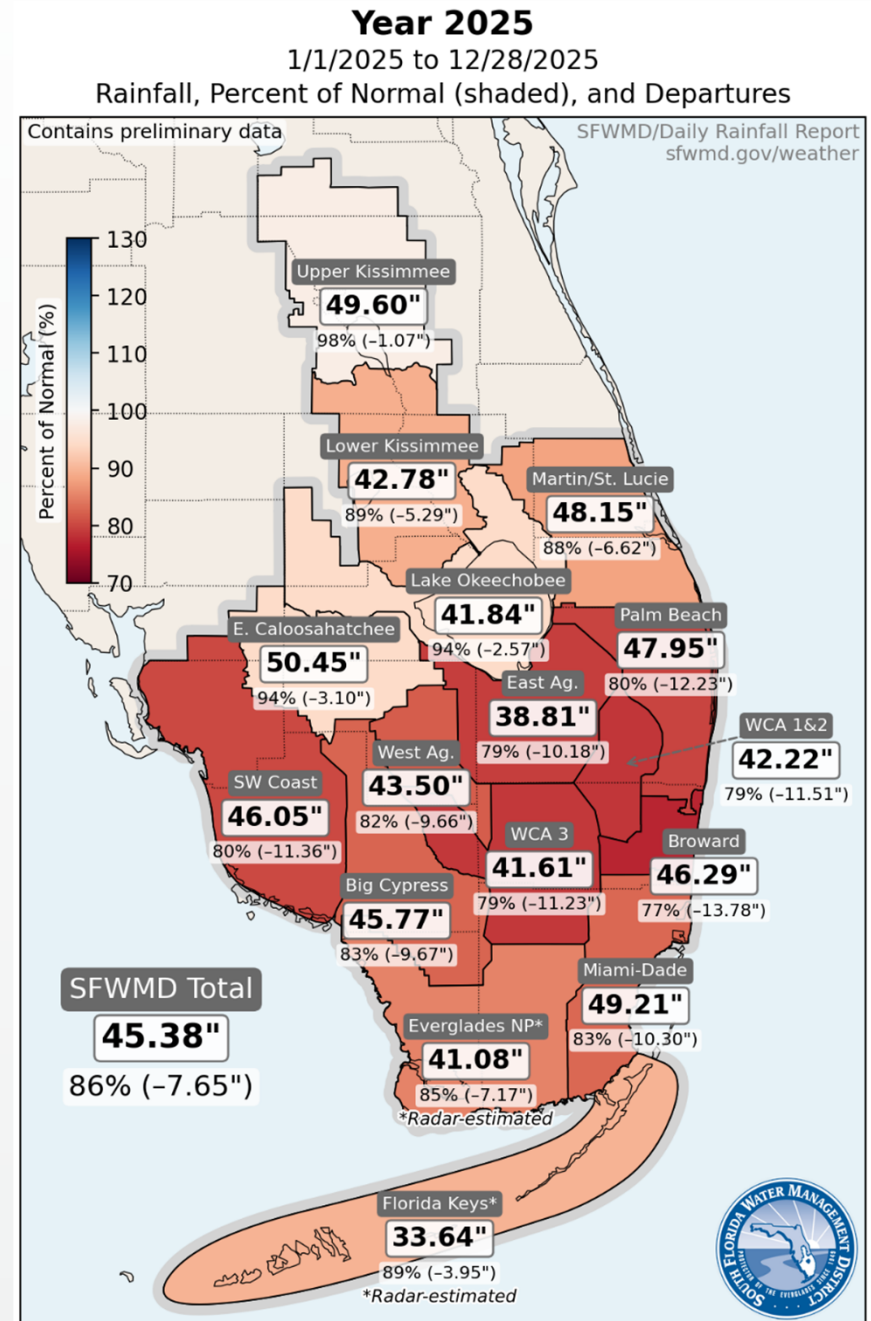
Reconstruction Finance Corporation (RFC) Loan
Secured critical loans to continue operations amidst tax delinquency and bank failures.

Report Outline

- Weather and water management
- Key projects
- Maintenance activities
- Regulatory actions
- Administrative functions

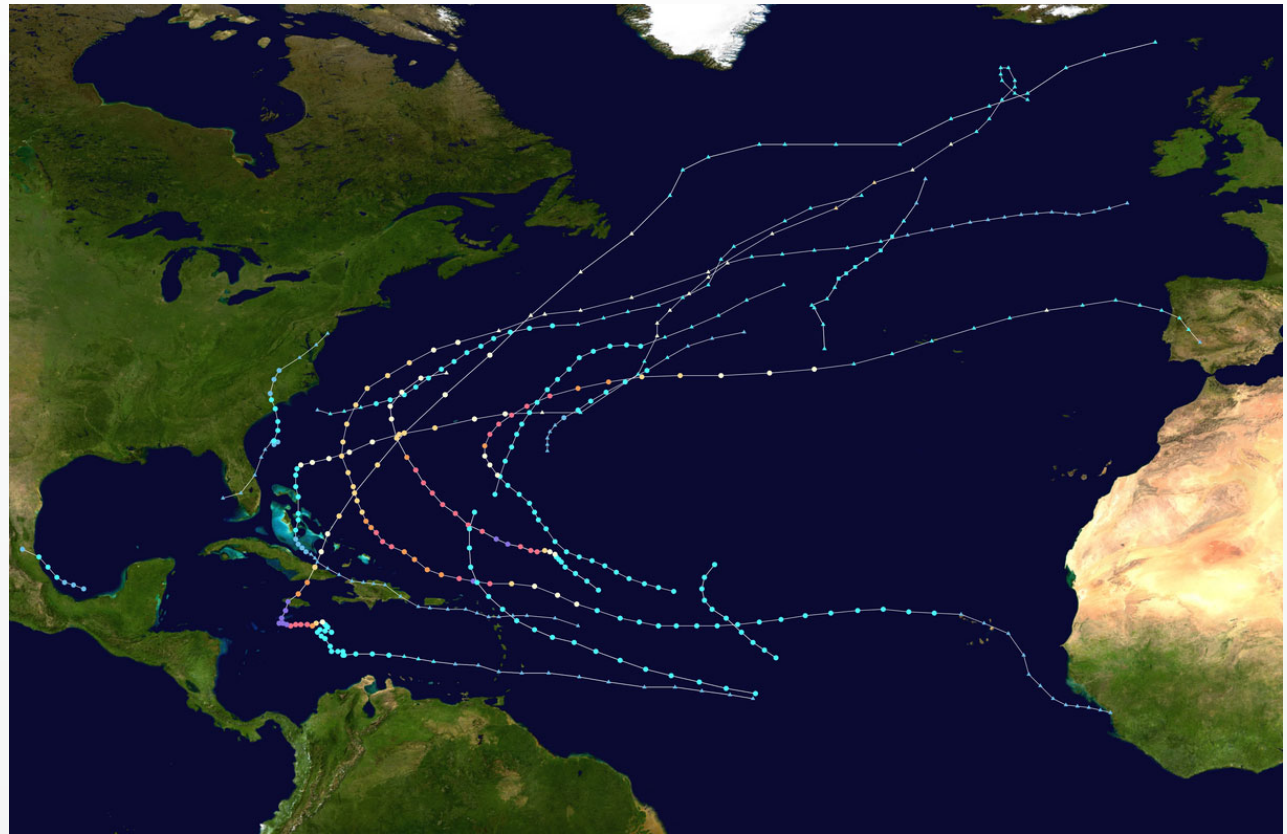
2025 Annual Rainfall

- Overall, LWDD experienced less than average annual rainfall
 - ~86% of normal rainfall
- Eastern Palm Beach County experienced significantly less than normal rainfall
 - ~80% of normal rainfall
 - ~ 1 foot rainfall deficit



Hurricane Season

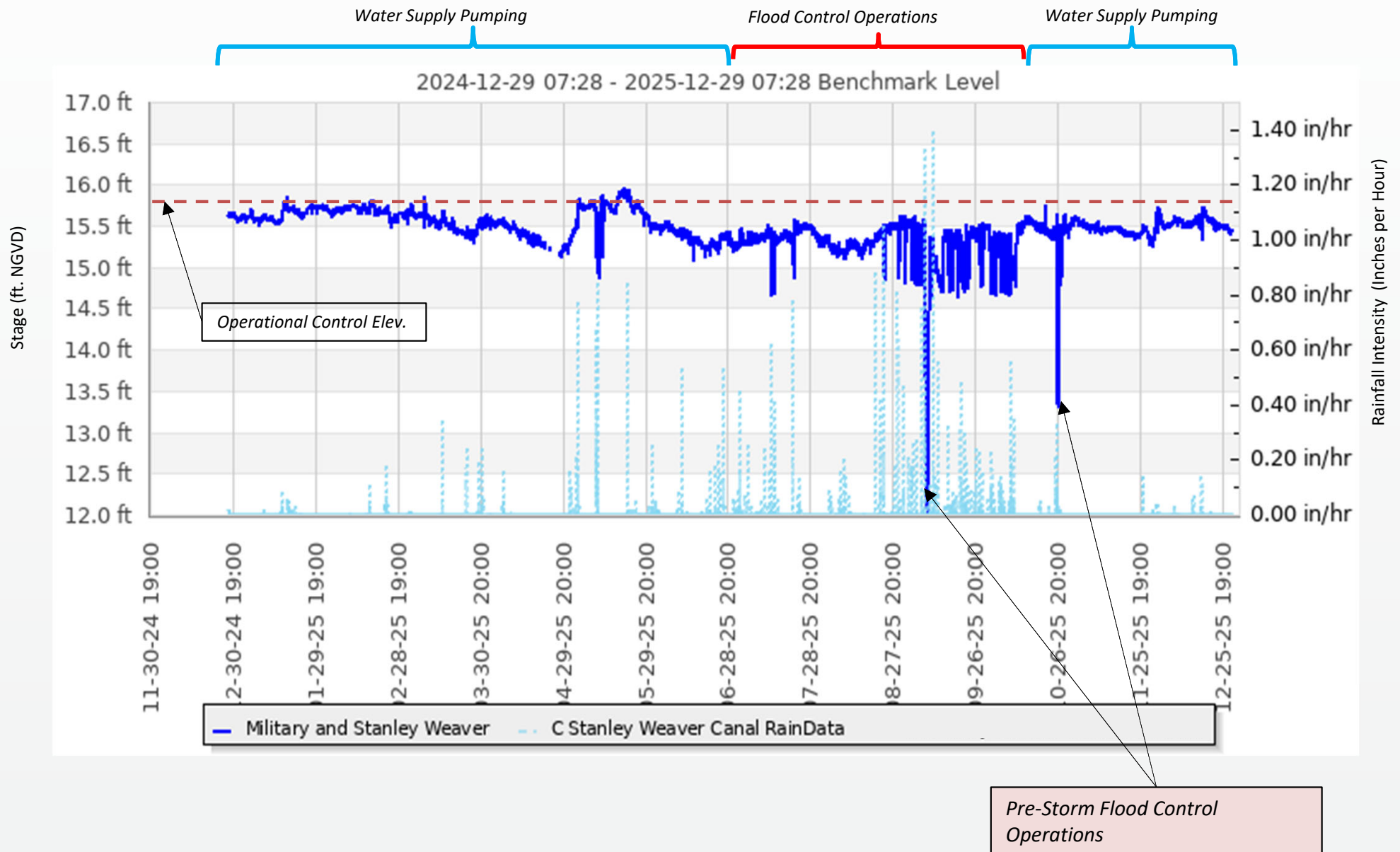
- Early forecasts predicted above normal probability of hurricane activity
- Actual activity was slightly below normal
- None of the tropical activity affected LWDD



2025 Hurricane Season Activity Map

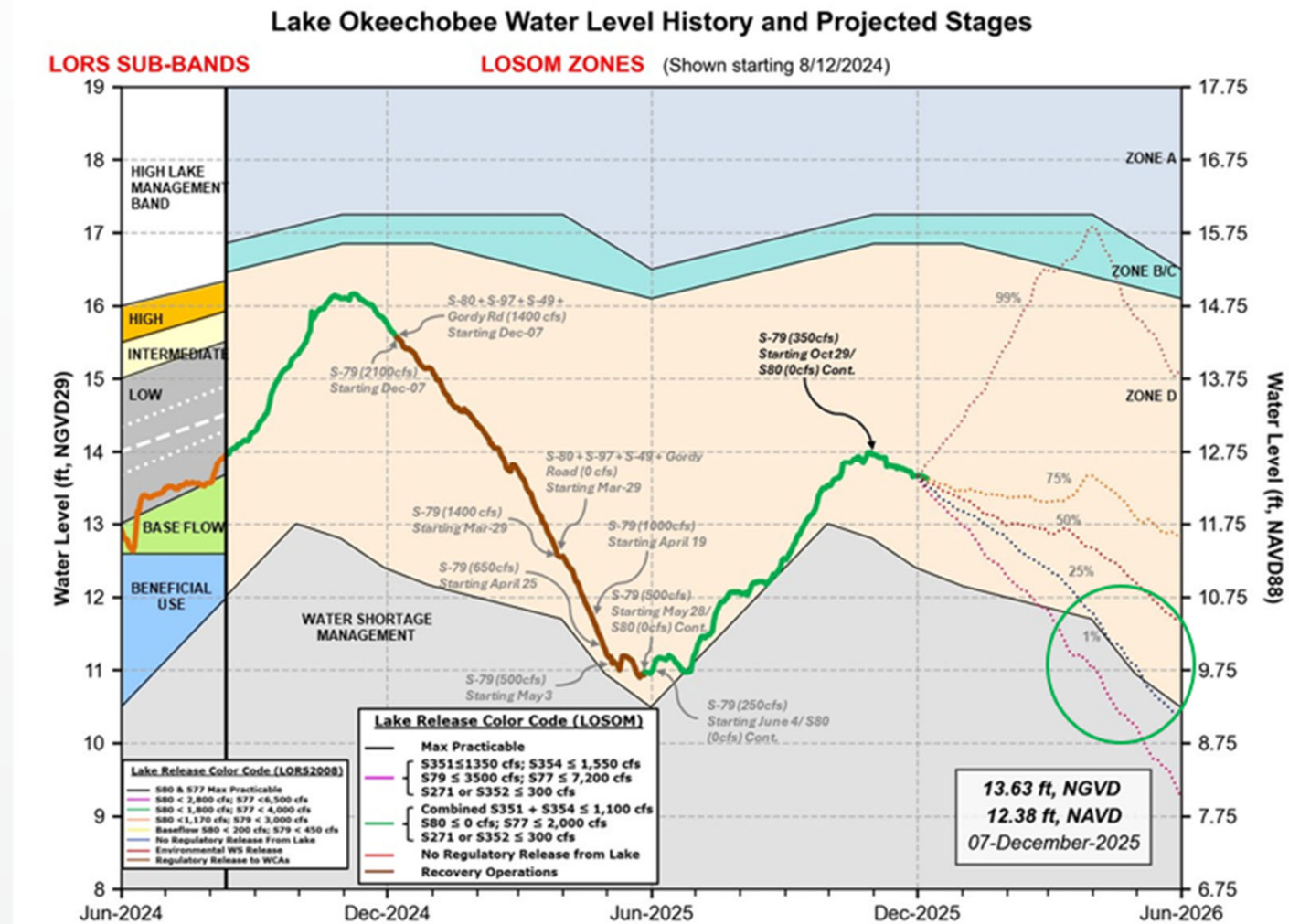


2025 General Water Control Operations



Lake Okeechobee

- New Regulation Schedule (LOSOM) in place
- Current stage: 13.30 ft NGVD
- USACE utilized LOSOM to drawdown the Lake during the 2025 Spring Dry Season for ecological benefits.
- This operation placed water users at higher risk of water shortage in the 2026 Spring Dry Season



C-51 Phase I Reservoir Deliveries

- Delivered 920 acre-feet of water over 5 months
 - 184 acre-feet each in April, May, June, July, August
- Received annual fee totaling \$110K; reimbursed for pumping costs totaling \$3K



Comprehensive Modeling Effort

✓ Project COMPLETED!

✓ Phase 1 - HYDROLOGY

- Sub-basin delineation and runoff

✓ Phase 2 -HYDRAULICS

- Canal geometry and culverts

✓ Phase 3a - COMPILING

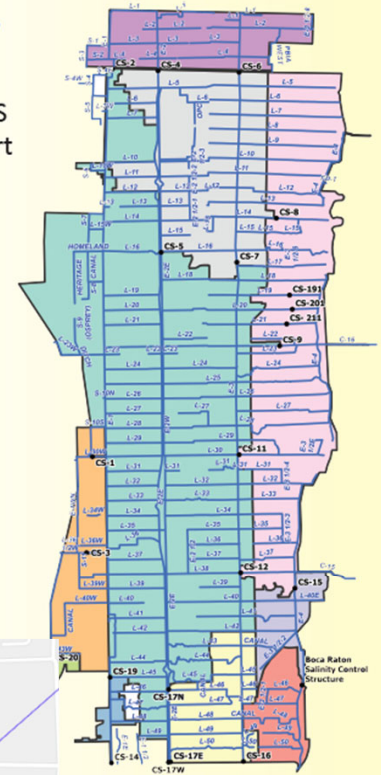
- Combining hydrologic & hydraulic components and develop functional model.

✓ Phase 3b - CALIBRATION

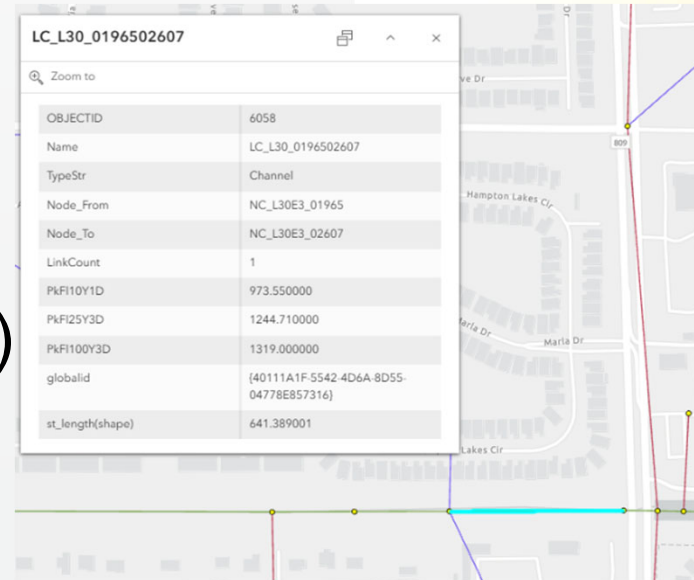
✓ Phase 4 - FINAL REPORT (supersedes prior “Interbasin Study 1996 rev”)

District-Wide SWMS Design Storm Report

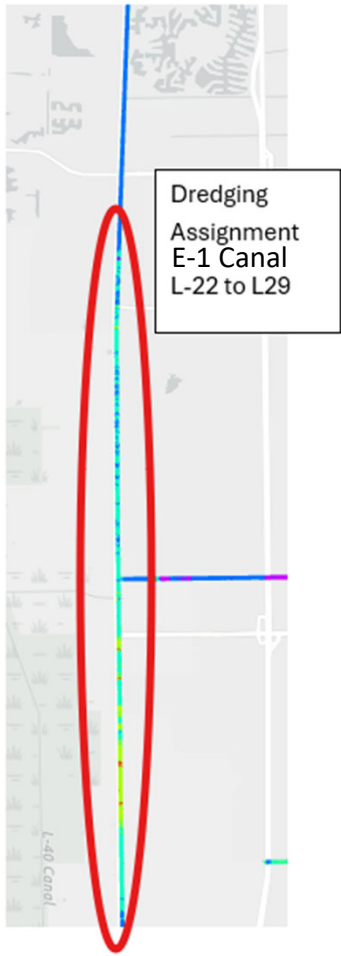
September 2025



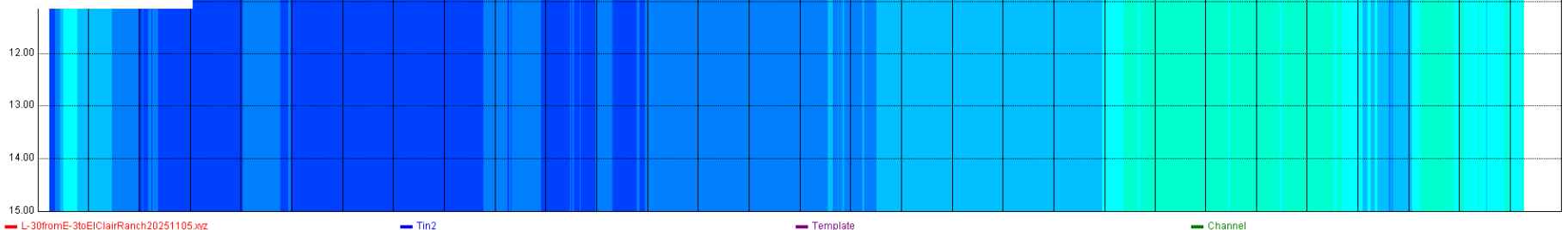
LC_L30_0196502607	
Zoom to	
OBJECTID	6058
Name	LC_L30_0196502607
TypeStr	Channel
Node_From	NC_L30E3_01965
Node_To	NC_L30E3_02607
LinkCount	1
PkFI10Y1D	973.550000
PkFI25Y3D	1244.710000
PkFI100Y3D	1319.000000
globalid	(40111A1F-5542-4D6A-8D55-04778E857316)
st_length(shape)	641.389001



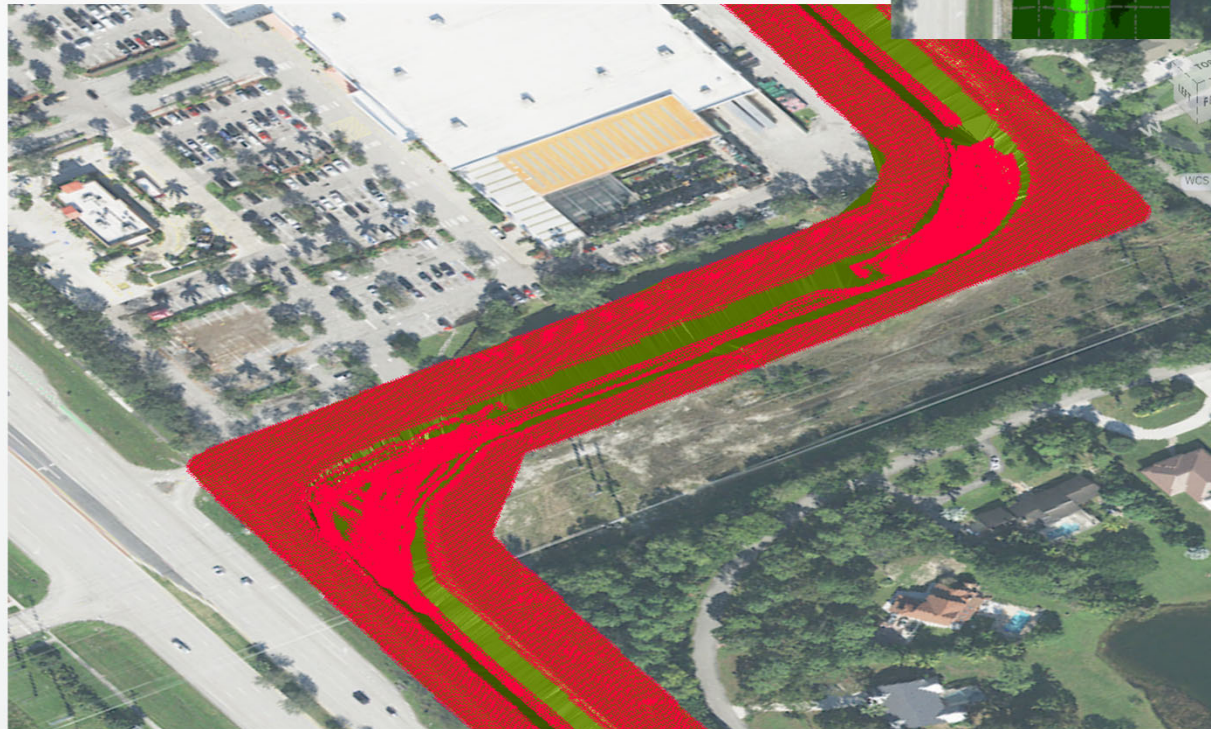
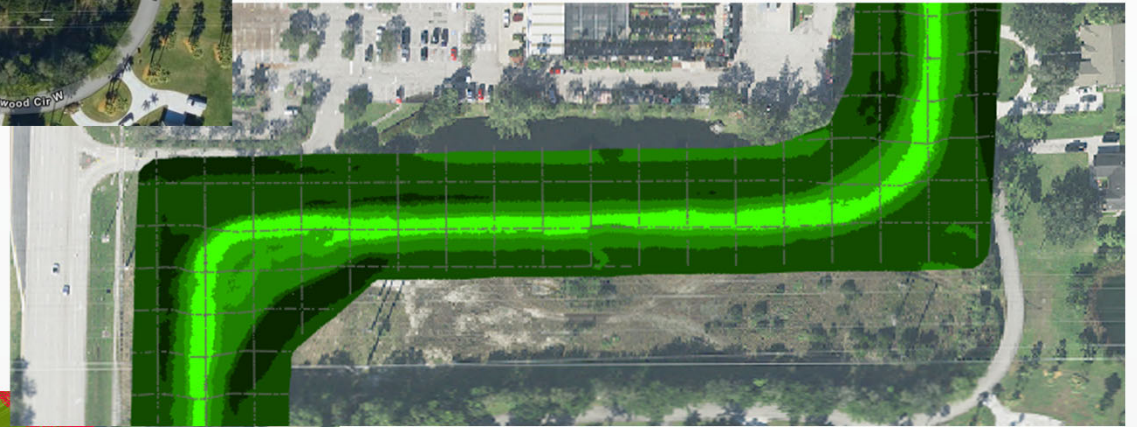
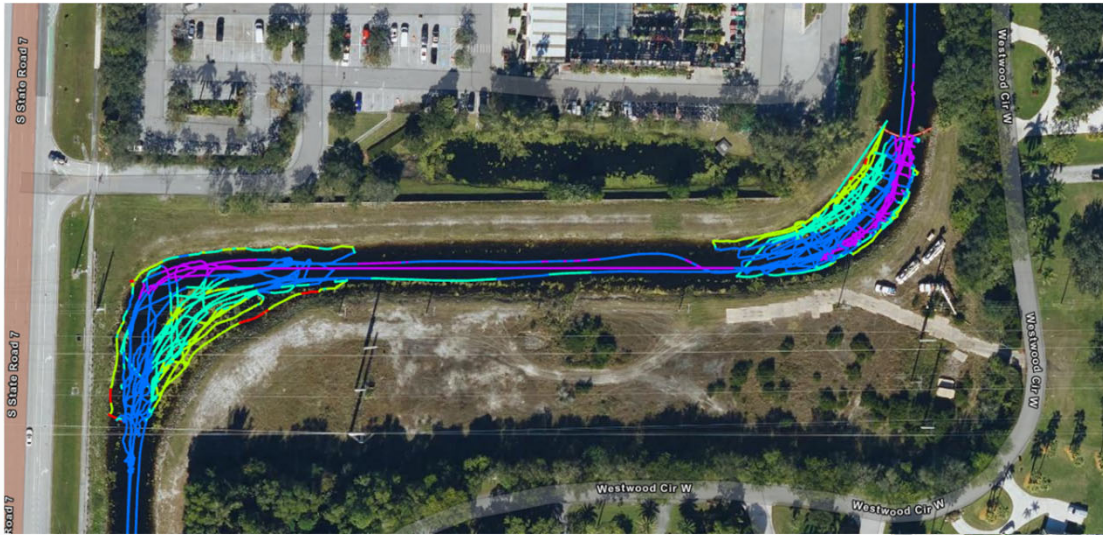
Canal Bathymetry



0 400 500 600 700 800 900 1000 1100



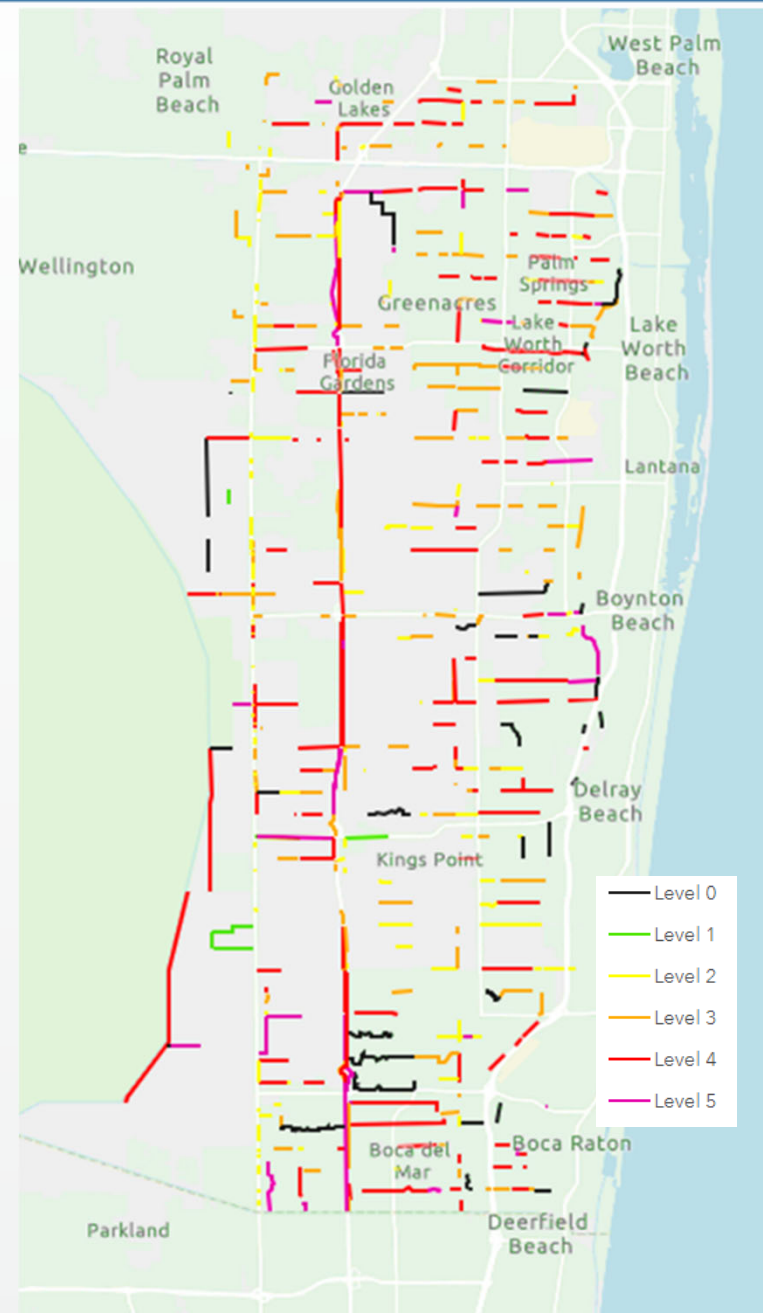
L-30 from E-3 to El Clair Ranch Road



Canal Rehabilitation Program – PHASE II Maintenance Restoration Program (MRP)



- CRP Phase II – Canal bank restoration underway!
 - GOAL: Reconstruct canal sections to recover banks and achieve final configuration for future maintenance; reduce dependence of herbicide treatment on restricted banks
- Completed inventory in 2023
 - 500 projects identified; over 250 miles
 - Projected completion over ~20 years



Maintenance Restoration L-45 Canal - Lyons to Golf Course Rd

Before



After



Maintenance Restoration L-32 Canal - E-3 to Military Trail

Before



After



Maintenance Restoration L-7 Canal - Jog to E-3 (in Progress)



Jan. 2020



Apr. 2020 CRP



Current MRP



Maintenance Restoration L-5 Canal - Jog to Fergusson (in Progress)



Before



Current MRP



Low Maintenance Bank Mowing

- Currently maintaining ~65 miles of low maintenance bank two times per year
 - Additional miles are continually being added as MRP projects create accessible banks.
 - Evaluating additional areas currently hand-treated by Aquatics to determine accessibility
- Low Maintenance work includes a little of everything!
 - Flat and slope mowing
 - Isolated tree removal
 - Routine side trimming for short distances
 - Small washout repair & light earthwork to improve access for small machines
 - Weed eating
 - Trash/debris pick-up, etc.



High Maintenance Bank Mowing

- ~1,626 miles of Flat Mowing
 - ~271 miles, 6 times per year
- ~1,143 miles of Slope Mowing
 - ~381 miles, 3 times per year
- FY25 Annual Contract for Mowing Services; \$308,010
 - Flat: ~167 miles, 6 times per year
 - Slope: ~198 miles, 2 times per year



Vegetation Management

- Treated ~7,505 acres of aquatic vegetation
 - ~1,034 acres of Floating Vegetation
 - ~1,111 acres of Submerged Vegetation
 - ~1,117 acres of Littoral Vegetation
 - ~4,243 acres of Littoral/Floating combined
- Treated ~653 acres of terrestrial treatments on low maintenance banks that are unable to be mowed
- Annual Contracted Services: \$66,417
 - North of C-51 Canal (*discontinued in April*)
 - Boca Basin



Vegetation Management

- Currently maintaining 206 booms throughout District canals
- Replaced 22 booms due to wear and/or boat traffic and added 7 new booms
- Continued mechanical removal of aquatic vegetation to supplement chemical treatment
- Documenting formal maintenance plan in response to Rule 40E-7.700 featuring booms to prevent debris from entering SFWMD canals



Canal Maintenance

- Completed routine dredging on ~26 miles of canal
- Hauled and distributed nearly 20,000 cubic yards of fill



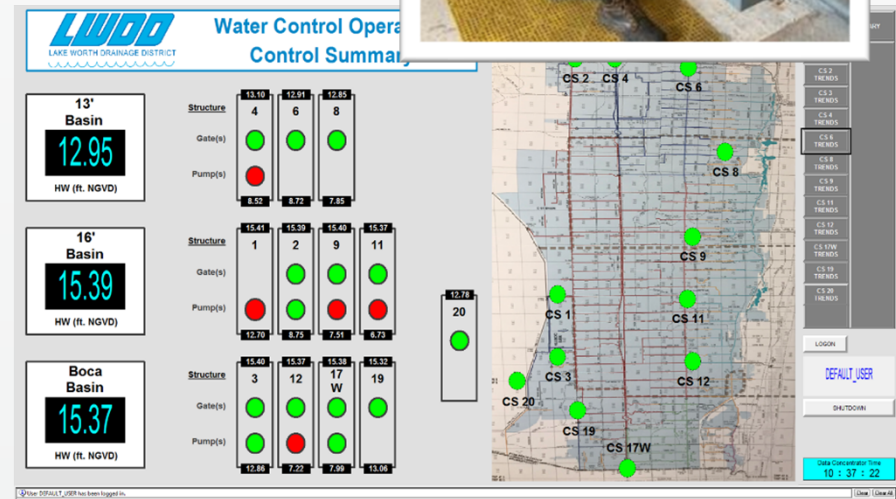
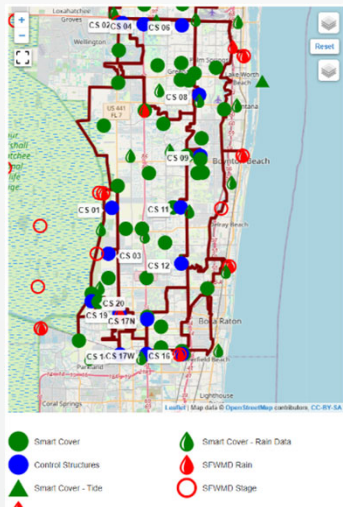
Canal Maintenance

- Completed over 77 miles of vertical side-trimming
- Hauled ~ 5,900 cubic yards of vegetation/mulch



Structure Maintenance & Water Control Operations

- Regularly service and maintain 14 major water control structures; continual monitoring of system components to ensure efficient operation of structures and flood control gates
- Completed replacement of SCADA servers and updates to software
- Continued enhancements to eRIS Water Control Dashboard



Structure Maintenance

- Repaired & installed pump at Control Structure #12



Structure Maintenance

- Completed replacement of radial gates at Control Structure #2



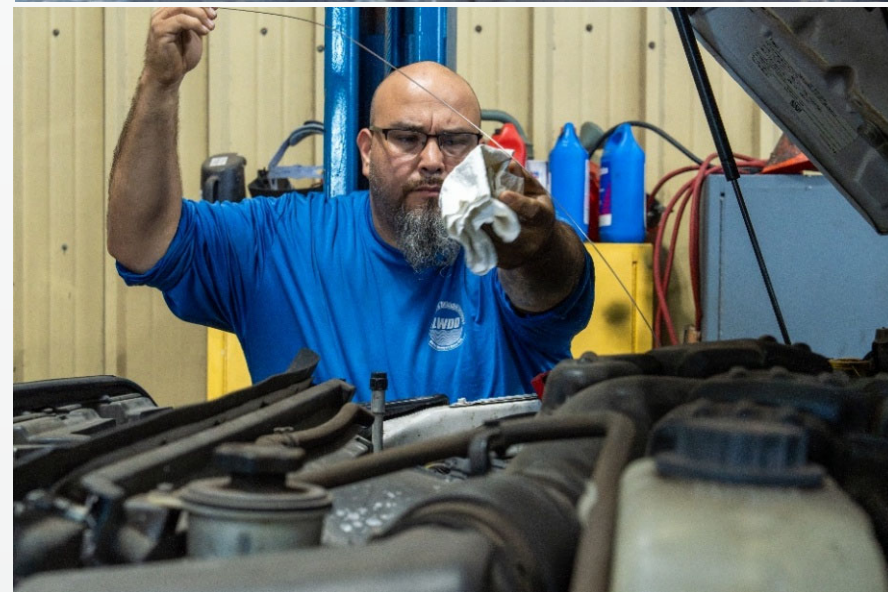
Facilities Maintenance

- Installed 14 new access gates
- Constructed new campus pole barn for equipment storage
- 1,168 iguanas eradicated to protect canal infrastructure



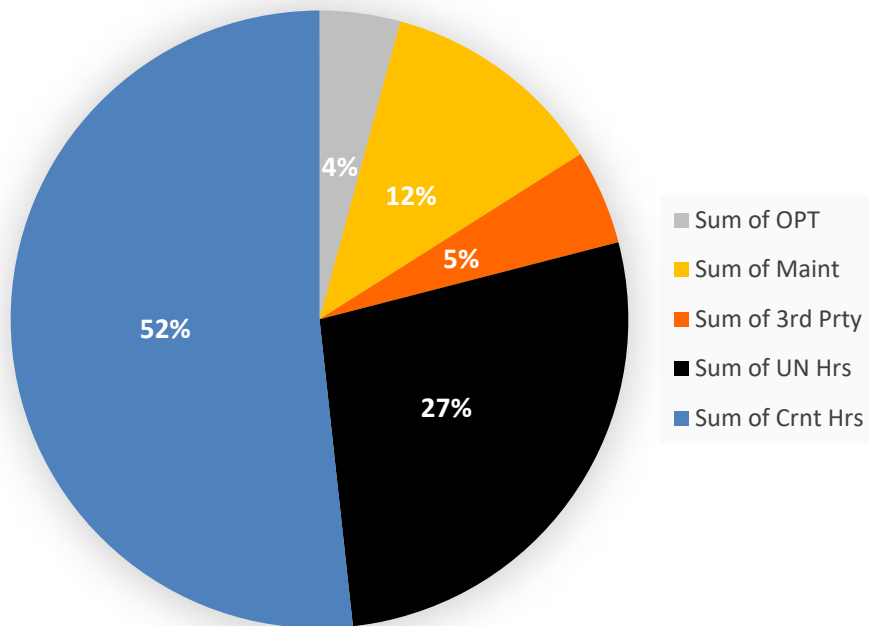
Fleet Maintenance

- District staff maintains a fleet of:
 - 59 light/heavy vehicles
 - 37 machines / heavy equipment
 - 12 tractor mowers
 - 7 boats
- Routine services completed
 - 126 light vehicles
 - 133 machines / heavy equipment
 - 66 tractor mowers

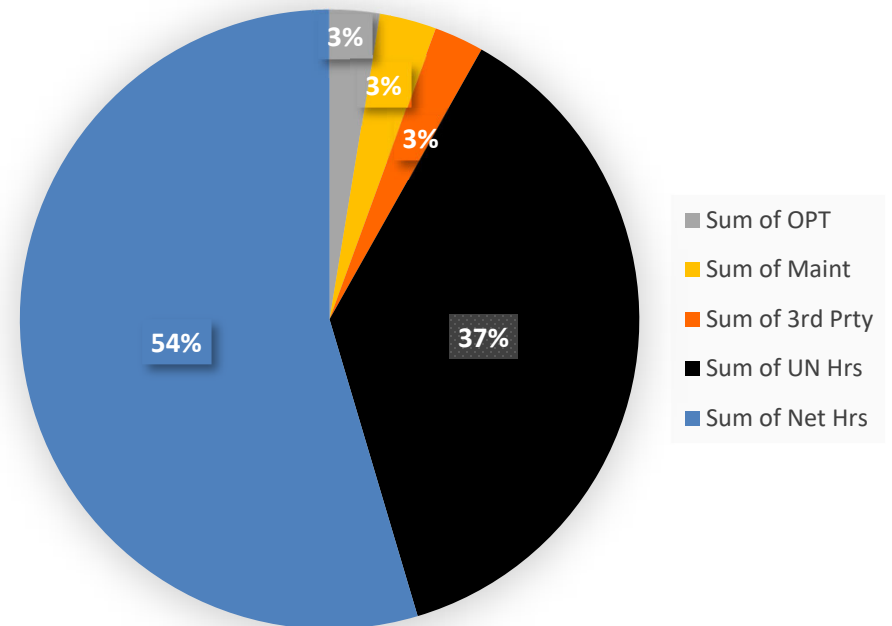


Equipment Utilization Heavy Equipment

**2024
Heavy Equipment**

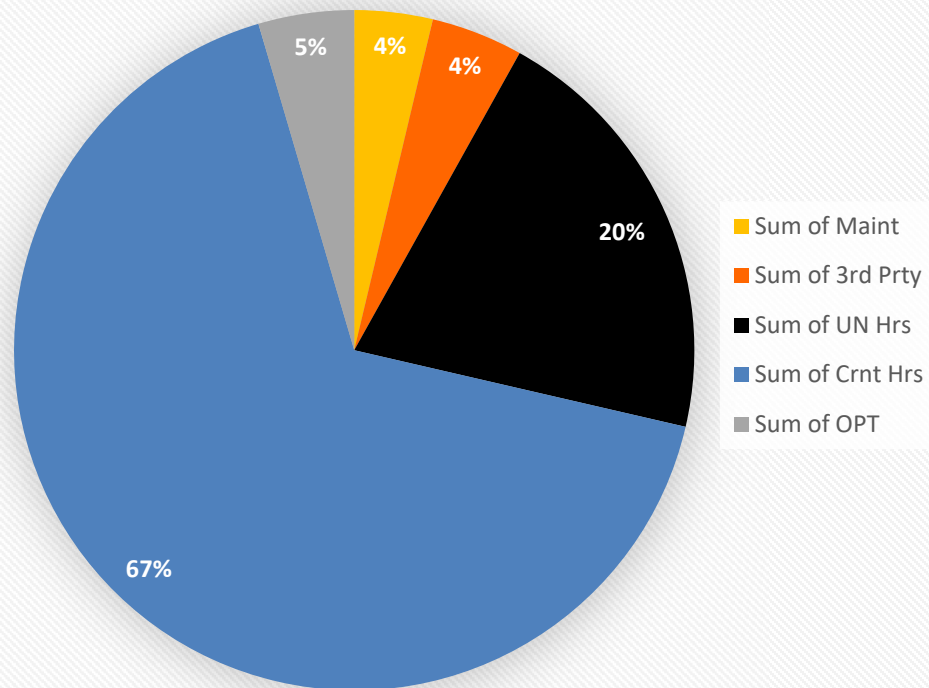


**2025
Heavy Equipment**

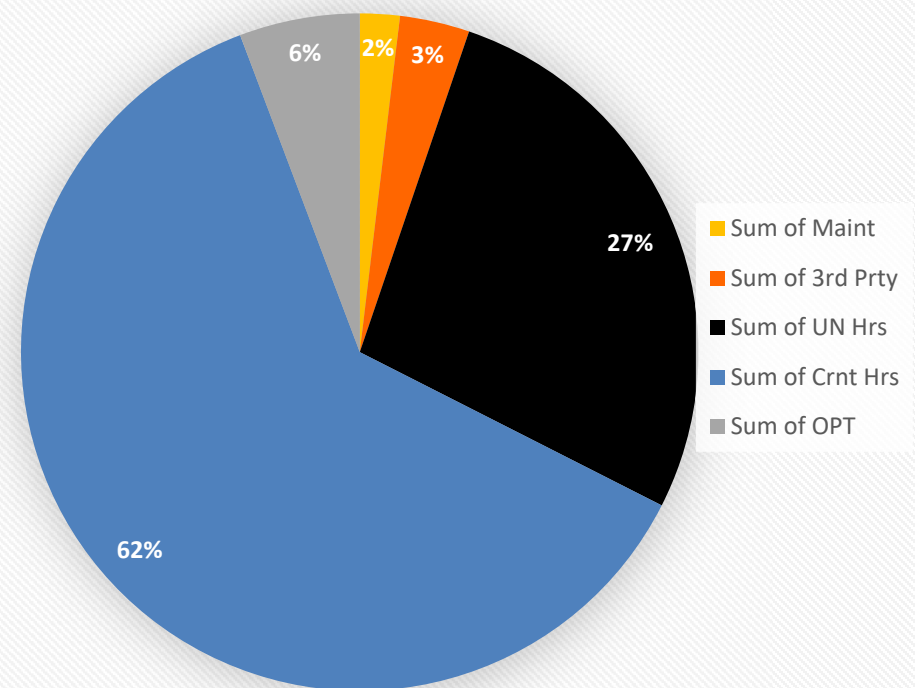


Equipment Utilization Mowers

**2024
Mower Utilization**

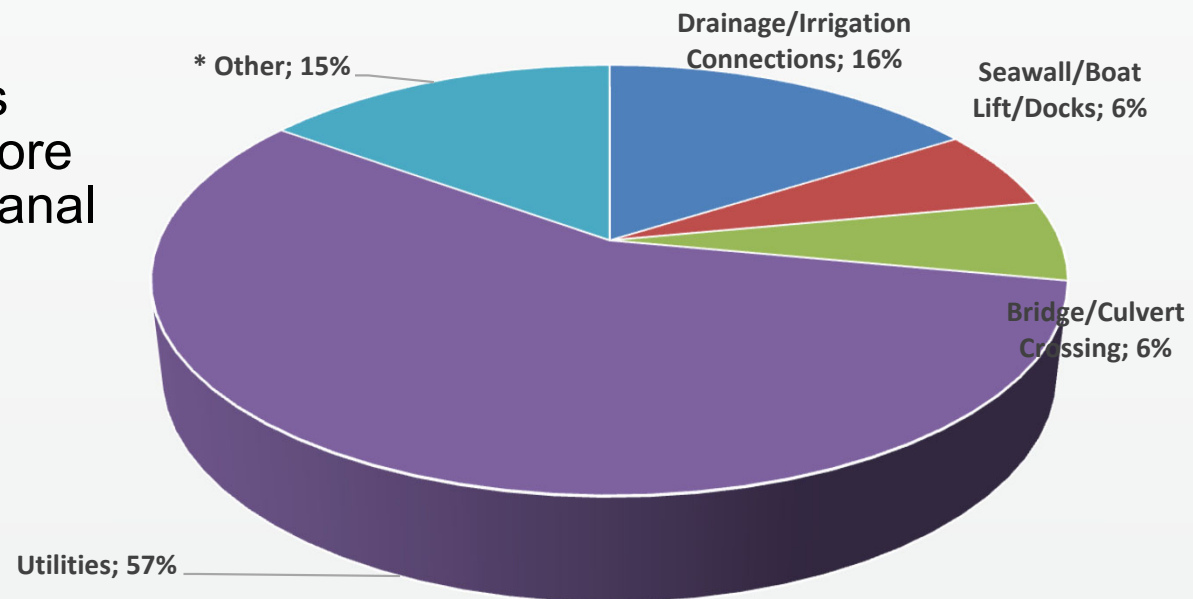
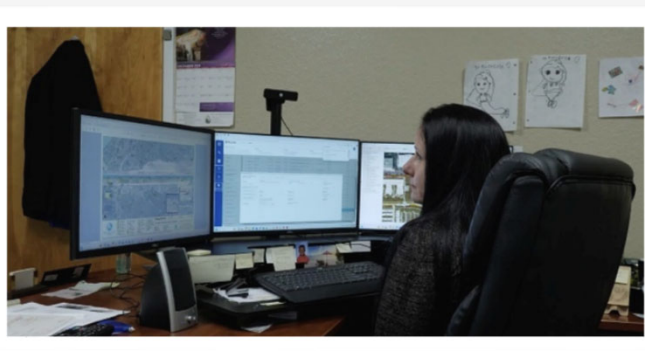
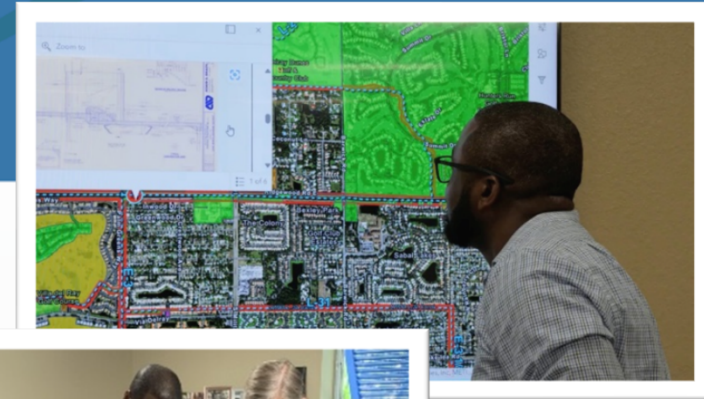


**2025
Mower Utilization**



Right-of-Way Regulation

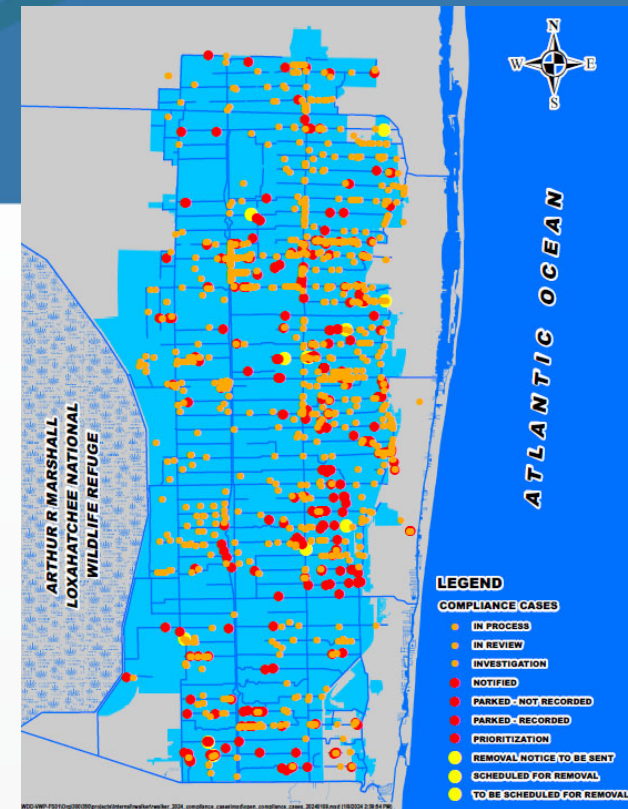
- Received 294 new right-of-way permit applications; issued 267 new permits
- Issued an additional 127 right-of-way permit modifications, extensions, transfers and permit related letters (objection, no objection, dewatering, etc.)
- Completed 903 plat and development reviews for county and municipality projects
- Researched and responded to 1,257 Chancery Case 407 review requests
- Completed 8 topographic surveys with cross sections and staked more than 5 miles of canal to support canal rehabilitation projects



* Other includes Access Gates, Multiple, Piping, Signs, Temp. Access

Right-of-Way Regulation

- Tracking 3,517 permit compliance deliverables (record drawings, construction commencement notices, fees, inspections, insurance) due for 1,767 individual permits
 - 683 or 19% of these deliverables are reoccurring annual deliverables
 - 92% compliance rate
- Collected \$30,151 (100%) in Service Agreement fees and \$200,872 (91%) in Annual Fees
- Opened 129 new compliance cases; resolved/closed 142 cases
- Staff continue to work towards closing out ~900 legacy compliance issues – over 100 cases (10%) acted upon
 - If not resolved through current compliance processes, Notice of Encroachment is recorded in public record to notify current/future owners
 - Removal by LWDD prioritized based on canal bank restoration schedules



Right-of-Way Regulation Compliance Example

Encroachment Relocation; L-19 - E of Lawrence Road - Fence

Fence Encroachment



Before

Fence Relocated Approx 3'



After



Right-of-Way Regulation Compliance Example

Failing Outfall Pipe; L-17 - E of Military Tr.

Failing Pipe



Ongoing Installation



New Outfall Pipe and Restored Bank



Before

After

Right-of-Way Regulation Compliance Example

Unauthorized Irrigation; E-3 - South of L-20

Irrigation Line and Heads



Irrigation Removed and R/W Restored



Before



After

L-25 Pipe Repair

Before

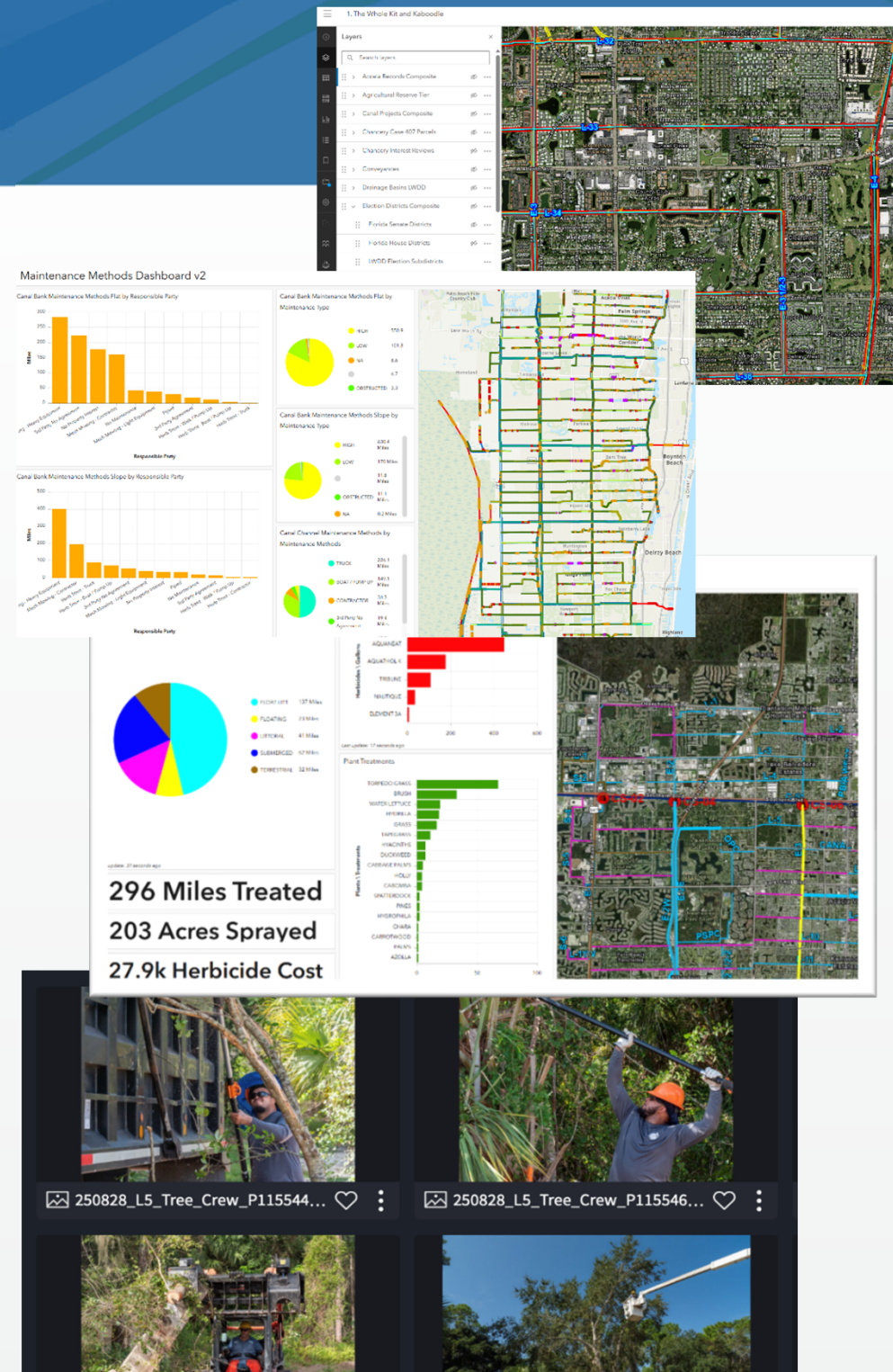


After



IT Enhancements

- Continued GIS enhancements to support regulatory and field staff
 - Updated ARCGIS Enterprise Portal to new version
 - Created operational dashboards for aquatics, mowing, service requests, storm response
 - Published updated GIS data sets: canal bathymetry, aerial imagery, parcel data, LiDAR, 360-degree canal videos, etc.
- Ongoing network and security enhancements
- Implemented a new internal photo and video management system to catalogue decades of LWDD history



Public Information

- Responded to 1000+ public inquiries and records requests
- Focused social media program to feature the public work accomplished by LWDD
- Created a new video series called “A Day at the Office” featuring different field crews
- Implemented a new online public photo gallery platform to showcase LWDD work

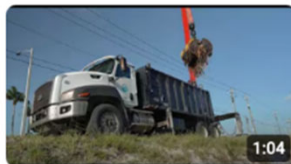


Who We Are: 2025 LWDD History

118 views • 5 months ago

Curious what LWDD is all about? minute video that introduces who we are now and get to know us better. :
[#watersupply](#)

Videos



August 2025: A Day at the Office - Aquatics Crew

54 views • 4 weeks ago



July 2025: A Day at the Office - Heavy Equipment Crew

90 views • 2 months ago



Improving Water Supply With a Restored Pump Installation

84 views • 3 months ago



Lake Worth Drainage District

4 days ago

Lupe Villegas has elevated the work of the LWDD Tree Crew for more than 13 years. Whether with chainsaws, heavy equipment or gloved hands, the Tree Crew helps ensure vegetation doesn't clog canals or block maintenance work on the flood control system.

Along with his public duties, Lupe is a father and Dallas Cowboys football fan.



View on Facebook · Share

👍👍 29 🔄 0 💬 3

View on Facebook · Share



7



1



0



Lake Worth Drainage District

1 week ago

The LWDD loves trees. Sometimes we have to give them a little trim. Other times the project requires a bit more work. Either way, the LWDD Tree Crew is on the job, in the heat, whenever they are needed, to keep canals and rights-of-ways clear for flood control and water supply operations.

Photo Gallery: flic.kr/s/aHBqjCsfGr



View on Facebook · Share



9



0



0

Community Outreach

- Hosted Annual Flood Control Workshop for Property Managers
- Hosted inaugural Wet Season Coordination call to streamline operations and communicate with property managers
- Participated in numerous community meetings, interviews and public meetings



Staffing

- Completed and implemented Classification & Compensation Study to ensure fair and competitive wages; minimum hourly rates adjusted for field staff
- 93 current budgeted positions (2 current vacancies)
- Current employees average 10 years of service
- 17 employees hired in FY25; 47 current employees hired since 2020
- 4 employees retired in FY25; 10 currently enrolled in Deferred Retirement Program (DROP)



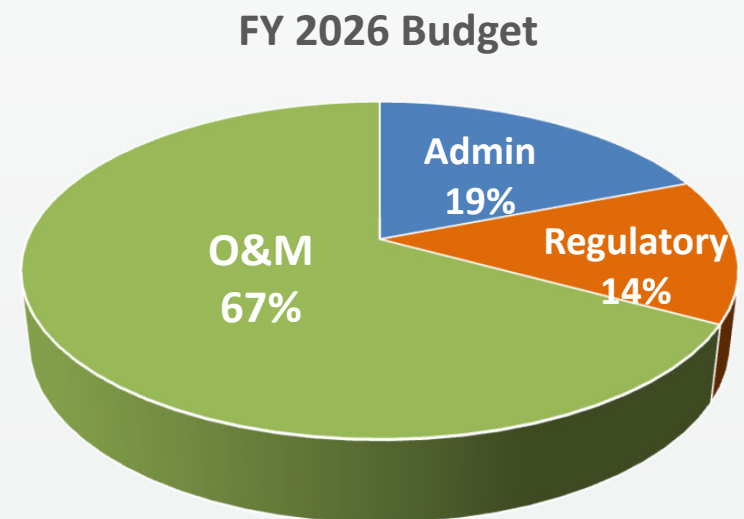
Safety

- Continued safety training for staff
 - CPR, First Aid and AED
 - Hazmat Level 2
 - Tractor Mower Operator Safety
 - Aerial Bucket Training
 - Fire Extinguisher
 - Defensive Driving
 - Chainsaw Safety
 - Departmental Quarterly Meetings
- Tree Crew and Aquatics Crew earned 'Golden Hard Hat' Award for safety



Financial Highlights

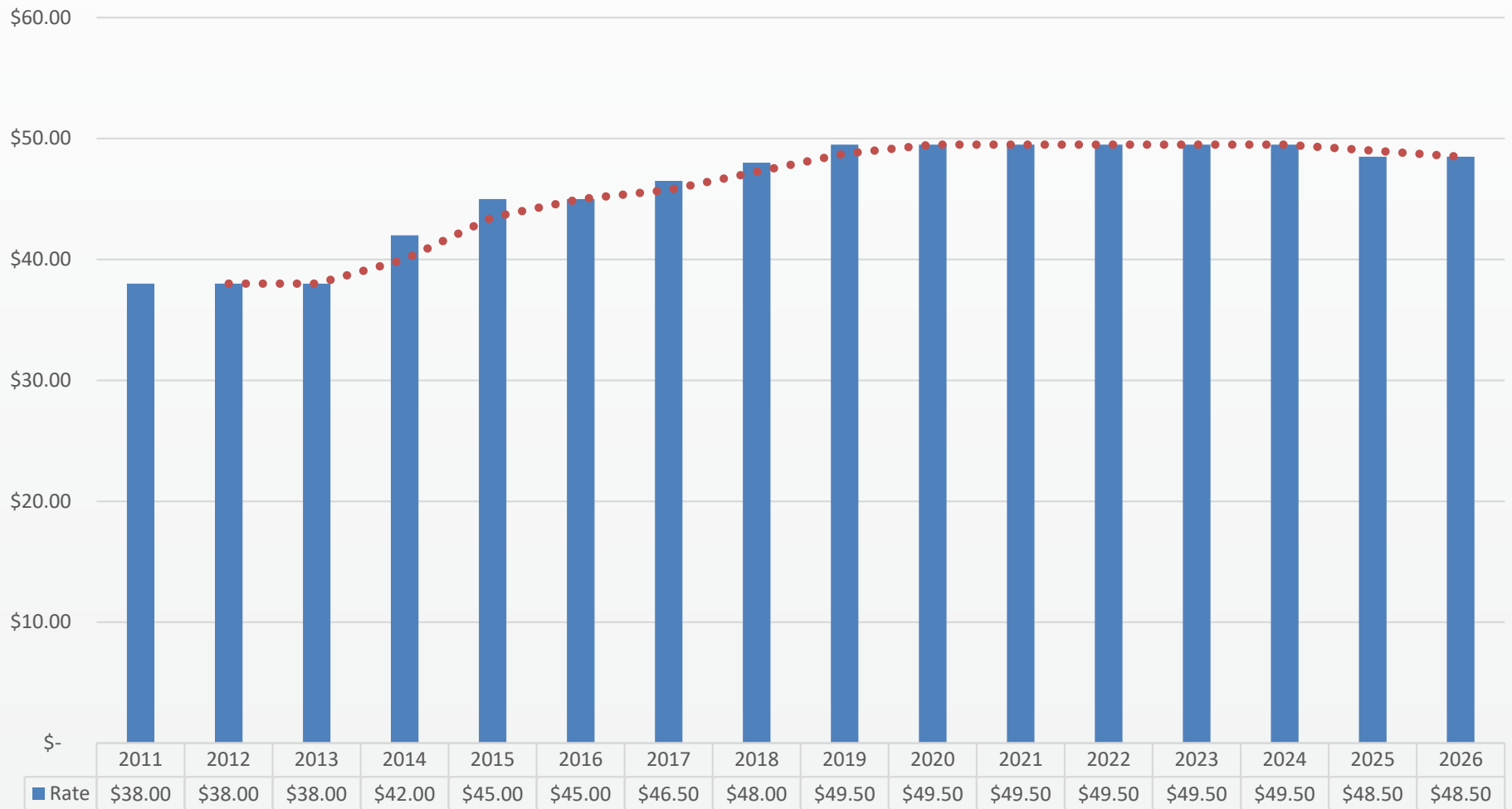
- Auditors issued unqualified opinion for FY 2024; financial records and statements are fairly and appropriately stated in accordance with generally accepted accounting principals
- Adopted FY 2026 budget of \$18.6 million with no change in non-ad valorem annual assessment of \$48.50
 - Using surplus and carryforward funds, this reflects the District's ongoing commitment to maintaining and improving infrastructure while responsibly considering the financial implications to landowners
- Revenues received:
 - Permit fees - \$700,000
 - Interest earnings/Change in Value - \$2,767,000
 - Quit claim deeds - \$1,500
 - Tower Lease - \$135,000
 - Sale of surplus equipment - \$89,000



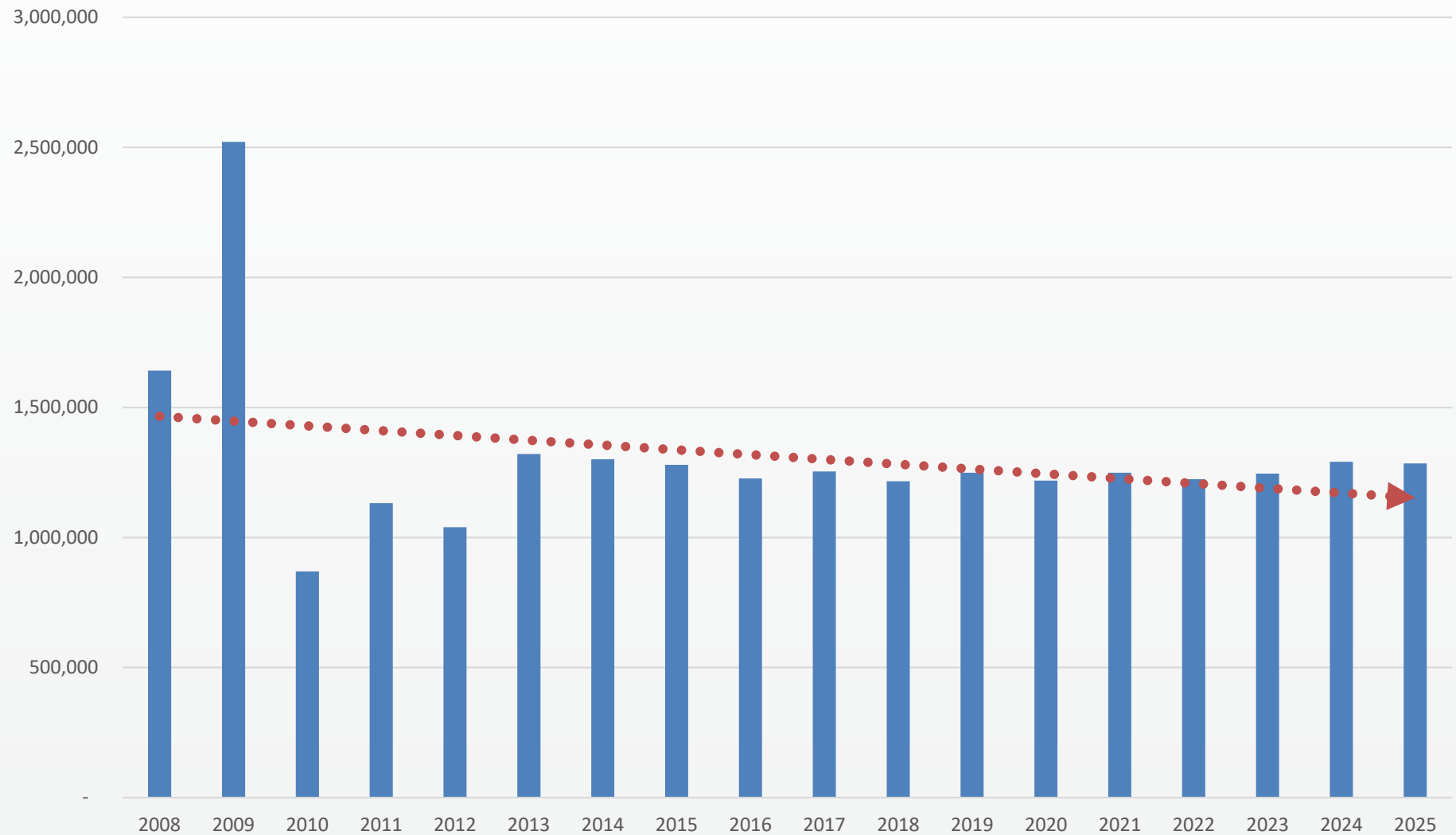
LWDD Assessment History



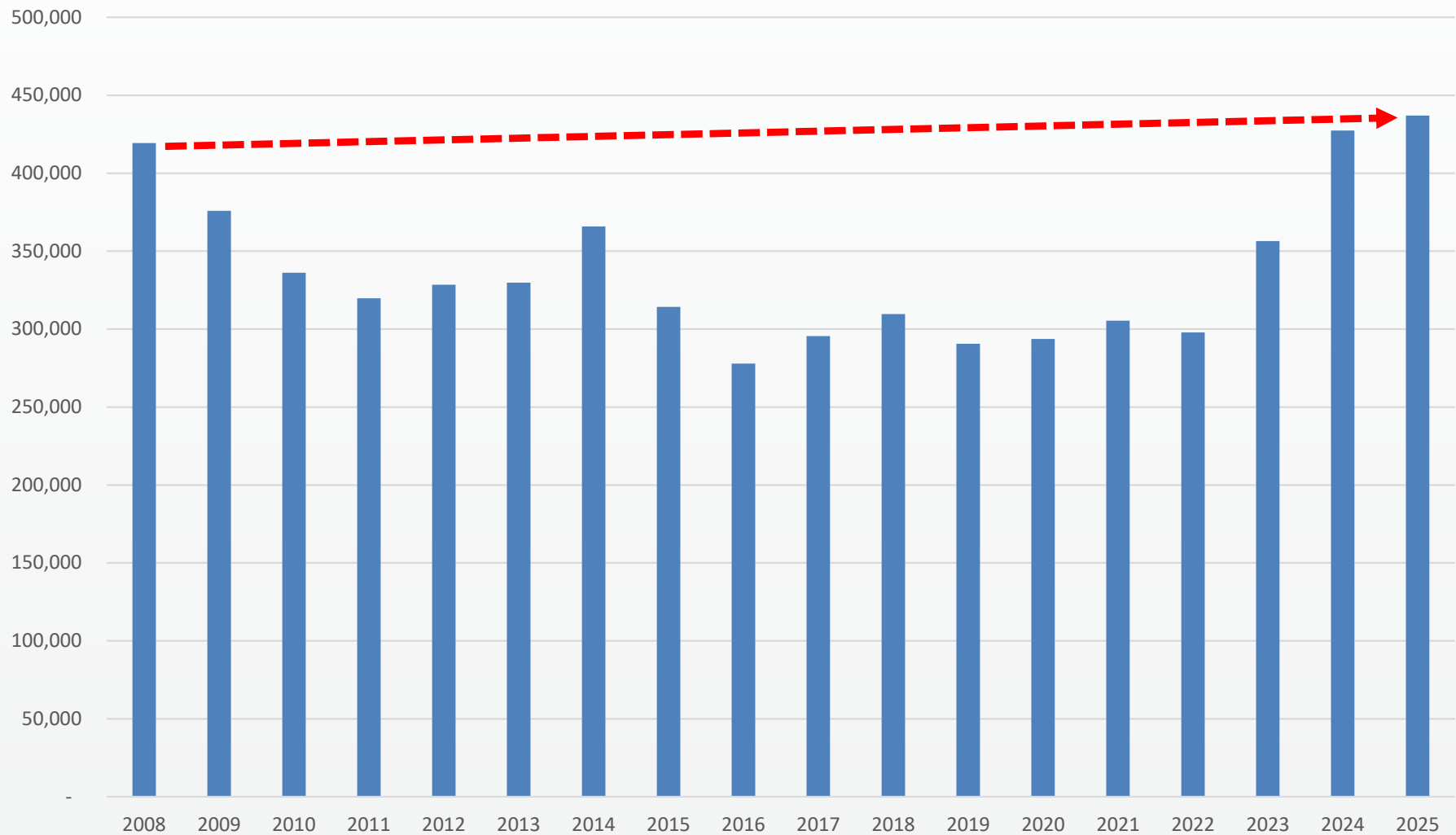
15-year history



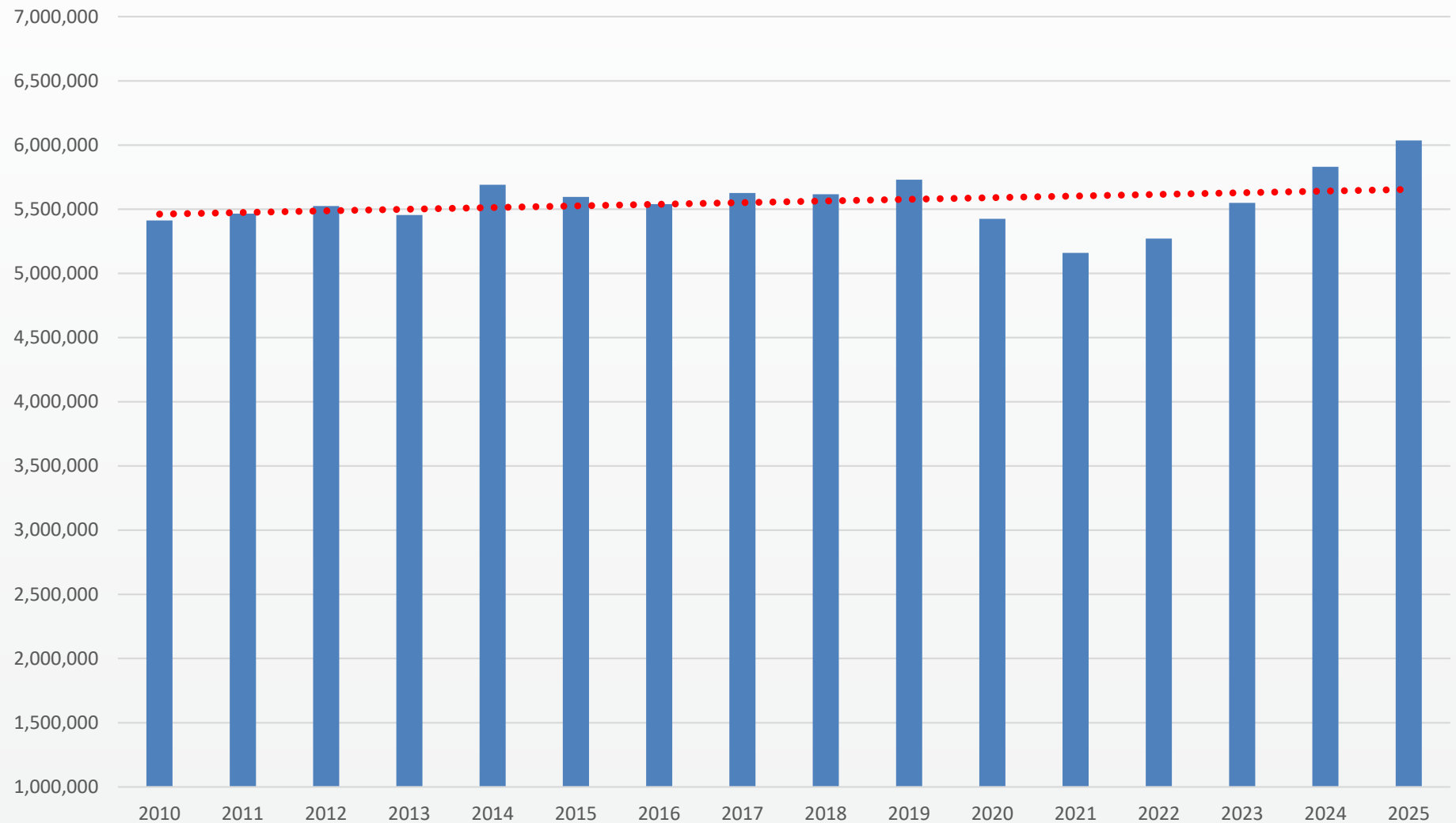
Maintained Healthcare Costs



Property/Casualty Insurance Costs

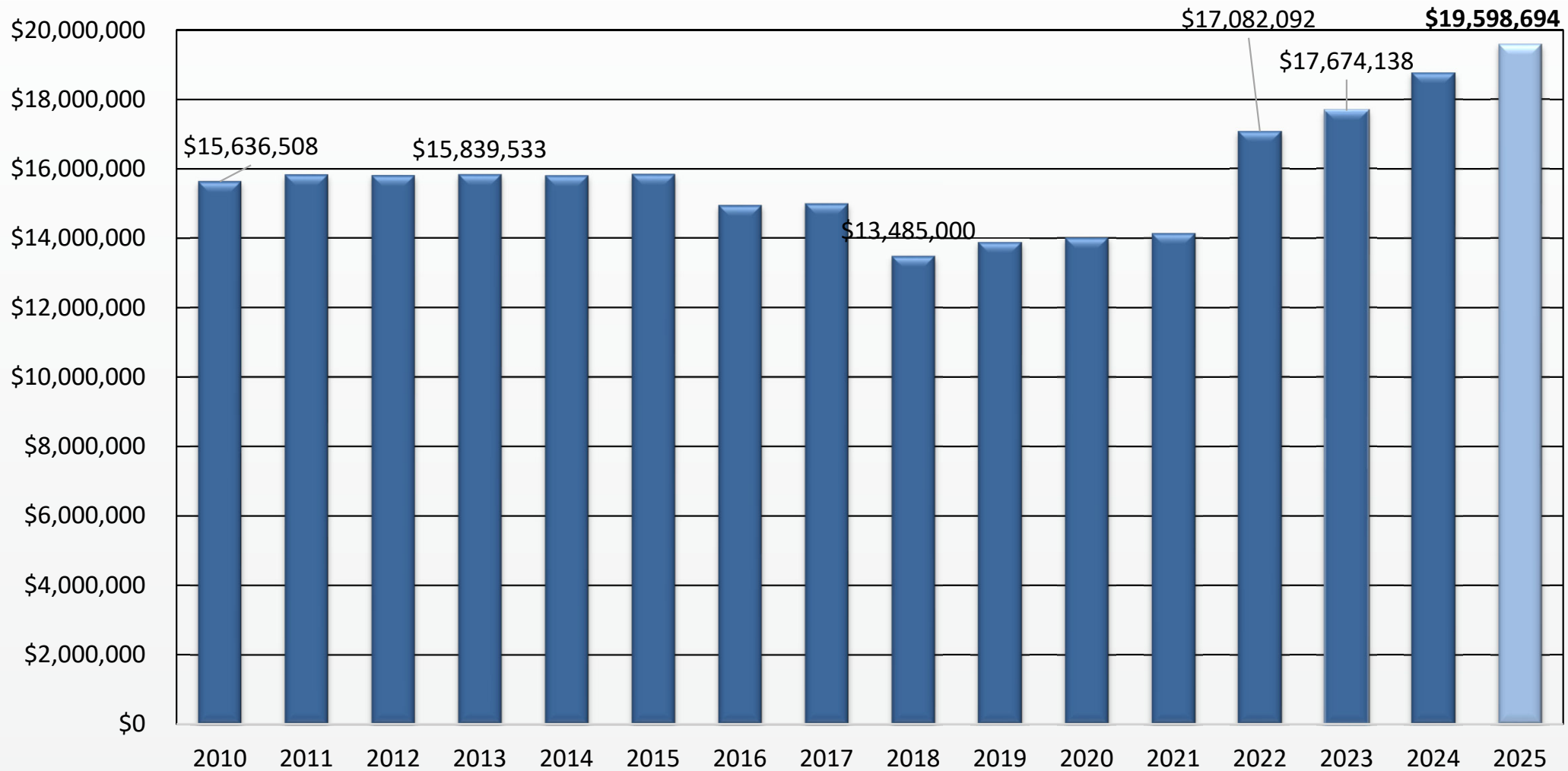


Maintained Salaries



Hazard Mitigation Funds

Fully Funded



Other Fund Balances

- Capital Projects Fund: \$30.7 million
- Self Insurance Fund: \$2.3 million
- Canal Revetment Fund: \$1.1 million

- CRP Phase II – Maintenance Restoration Program (MRP)
 - Restoration of low maintenance canal banks
 - Management of existing structural encroachments on rights-of-way remaining after canal rehabilitation
- Addressing legacy compliance issues
- Ongoing capital projects for refurbishment of water control infrastructure
 - Hydrologic model; last comprehensive model completed in 1992, nearly 30 years ago
 - Secondary Control Structure remediation and enhancements
- Regional water supply issues
 - Lake Okeechobee Operating Schedule (LOSOM)
 - Coordination with USACE / SFWMD on a 'new' Lake Okeechobee Regulation Schedule to coordinate operations of recently constructed CERP projects expected to start in 2026
- Turnpike widening project coordination

Whitworth Canal Dedication



Recommendation

- The Annual Report to Landowners provides an overview of the District's annual activities, including District activities undertaken in furtherance of the adopted water control plan
- Recommend acceptance of report pursuant to Florida Statutes Ch. 298.26