

REVISIONS:		DRAWING INFORMATION:	
Nr:	DATE:	BY:	DATE:
			07/31/2017
			SCALE: 1" = 100'
			DRAWN BY: D. BENDS
			CHECKED BY: D. BENDS
			CAD FILE: 16-10063P01-E1WN_L36W_L30W16-10063P01-E1WN_L30W_L36.5W.dwg
			AERIAL DATE: 2015

NOTE:  
MAP WAS COMPILED USING PALM BEACH COUNTY GIS GEOGRAPHIC DATA, SURVEYS, DEEDS, PLATS, PLANIMETRIC MAPS, AND OTHER PUBLIC DOMAIN RECORDS. WHILE EVERY EFFORT HAS BEEN MADE TO PRESERVE THE INTEGRITY OF THE DATA, THE ACCURACY VARIES AND SHOULD NOT BE RELIED UPON FOR ANYTHING OTHER THAN REFERENCE.

MAP DISCLAIMER:  
LAKE WORTH DRAINAGE DISTRICT MAKES NO WARRANTIES AND/OR REPRESENTATIONS WITH RESPECT TO SUCH INFORMATION AND FURTHER EXPRESSLY DISCLAIMS ANY AND ALL WARRANTIES AND/OR REPRESENTATIONS REGARDING THE USABILITY, ACCURACY, COMPLETENESS, VALIDITY AND RELIABILITY OF SUCH INFORMATION.

**MAP SHOWN HEREON IS FOR INFORMATIONAL PURPOSES ONLY AND DOES NOT REPRESENT A SURVEY**

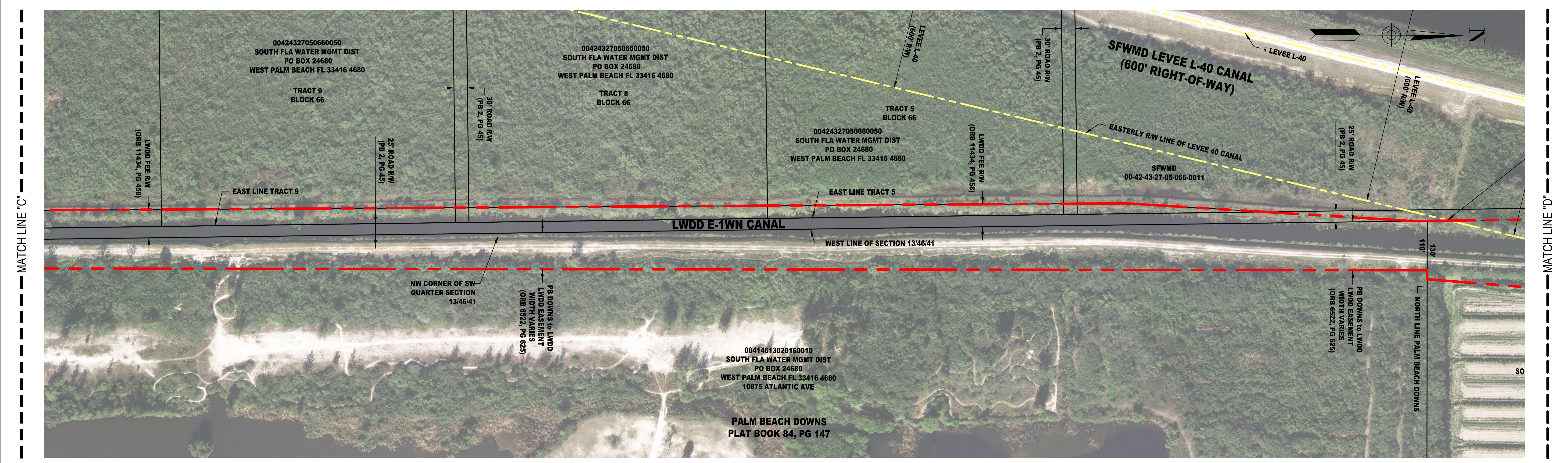
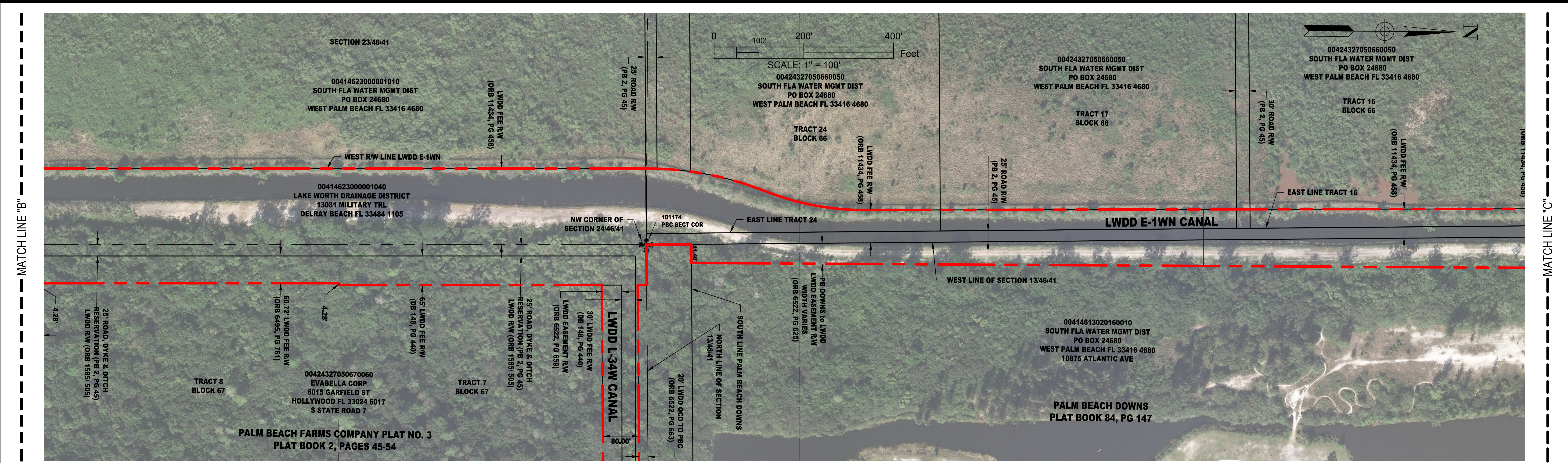
**LAKE WORTH DRAINAGE DISTRICT**  
13081 MILITARY TRAIL  
DELRAY BEACH, FLORIDA 33484-1105  
PHONE (561) 498-5363 • FAX (561) 495-9694  
WWW.LWDD.NET



**CANAL REHABILITATION PROJECT**  
**E-1WN CANAL RIGHT-OF-WAY**  
**L-30W CANAL TO L-36½W CANAL**

**SHEET 1 OF 3**  
LWDD PROJECT Nr:  
**16-10063P01**





REVISIONS:		DRAWING INFORMATION:	
No.	DATE:	DESCRIPTION:	BY:

NOTE: MAP WAS COMPILED USING PALM BEACH COUNTY GIS GEOGRAPHIC DATA, SURVEYS, DEEDS, PLATS, PLANIMETRIC MAPS, AND OTHER PUBLIC DOMAIN RECORDS. WHILE EVERY EFFORT HAS BEEN MADE TO PRESERVE THE INTEGRITY OF THE DATA, THE ACCURACY VARIES AND SHOULD NOT BE RELIED UPON FOR ANYTHING OTHER THAN REFERENCE.

MAP DISCLAIMER: LAKE WORTH DRAINAGE DISTRICT MAKES NO WARRANTIES AND/OR REPRESENTATIONS WITH RESPECT TO SUCH INFORMATION AND FURTHER EXPRESSLY DISCLAIMS ANY AND ALL WARRANTIES AND/OR REPRESENTATIONS REGARDING THE USABILITY, ACCURACY, COMPLETENESS, VALIDITY AND RELIABILITY OF SUCH INFORMATION.

**MAP SHOWN HEREON IS FOR INFORMATIONAL PURPOSES ONLY AND DOES NOT REPRESENT A SURVEY**

**LAKE WORTH DRAINAGE DISTRICT**

13081 MILITARY TRAIL  
 DELRAY BEACH, FLORIDA 33484-1105  
 PHONE (561) 498-5363 • FAX (561) 495-9694  
 WWW.LWDD.NET



**CANAL REHABILITATION PROJECT**

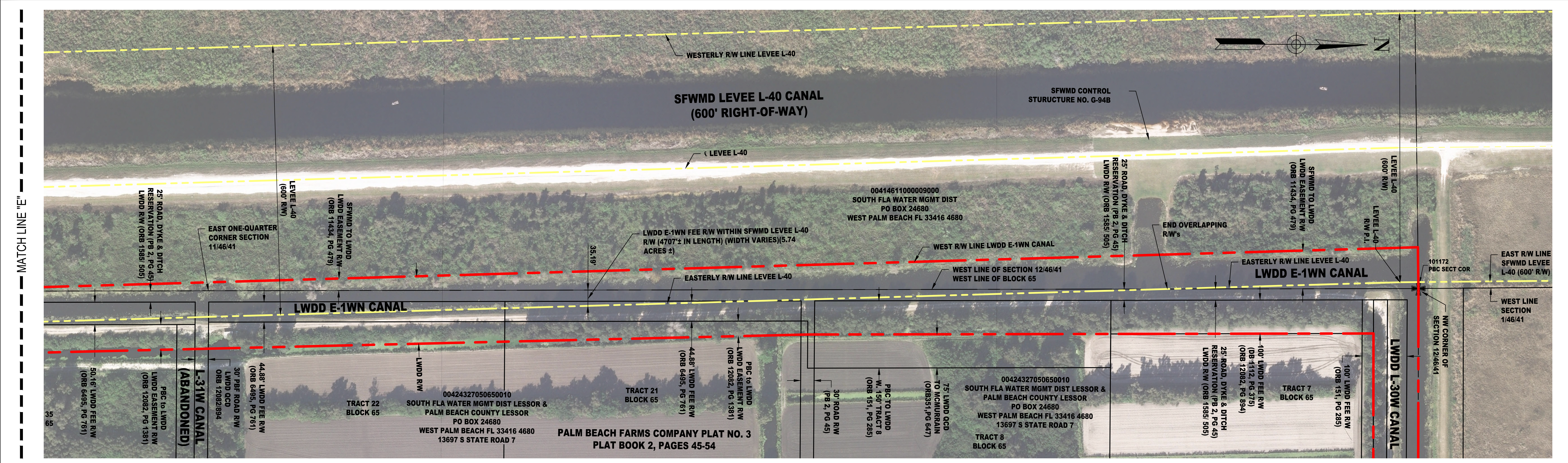
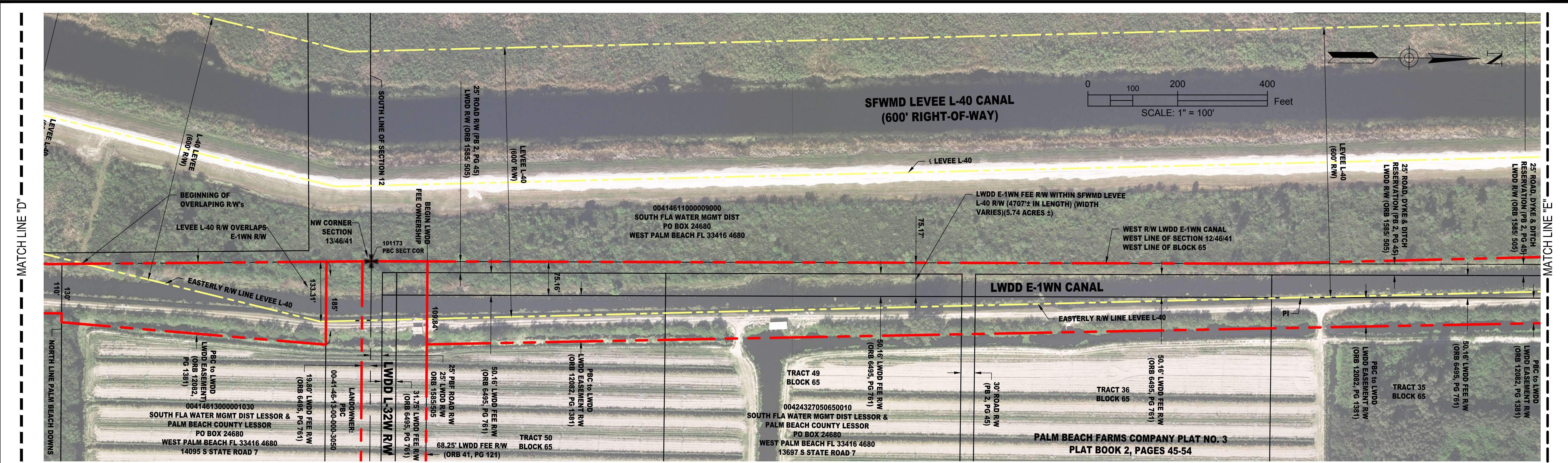
**E-1WN CANAL RIGHT-OF-WAY**  
**L-30W CANAL TO L-36½W CANAL**

SHEET **2** OF **3**

LWDD PROJECT No:  
**16-10063P01**

Q:\540\CAD\_projects\10063p01-E1WN\_L36W\_L30W16-10063p01-E1WN\_L30W\_L36.5W.dwg 7/31/2017 9:03 AM





REVISIONS:		DRAWING INFORMATION:	
No.	DATE:	DESCRIPTION:	BY:

NOTE:  
 MAP WAS COMPILED USING PALM BEACH COUNTY GIS GEOGRAPHIC DATA, SURVEYS, DEEDS, PLATS, PLANIMETRIC MAPS, AND OTHER PUBLIC DOMAIN RECORDS. WHILE EVERY EFFORT HAS BEEN MADE TO PRESERVE THE INTEGRITY OF THE DATA, THE ACCURACY VARIES AND SHOULD NOT BE RELIED UPON FOR ANYTHING OTHER THAN REFERENCE.

MAP DISCLAIMER:  
 LAKE WORTH DRAINAGE DISTRICT MAKES NO WARRANTIES AND/OR REPRESENTATIONS WITH RESPECT TO SUCH INFORMATION AND FURTHER EXPRESSLY DISCLAIMS ANY AND ALL WARRANTIES AND/OR REPRESENTATIONS REGARDING THE USABILITY, ACCURACY, COMPLETENESS, VALIDITY AND RELIABILITY OF SUCH INFORMATION.

**MAP SHOWN HEREON IS FOR INFORMATIONAL PURPOSES ONLY AND DOES NOT REPRESENT A SURVEY**

**LAKE WORTH DRAINAGE DISTRICT**  
 13081 MILITARY TRAIL  
 DELRAY BEACH, FLORIDA 33484-1105  
 PHONE (561) 498-5363 • FAX (561) 495-9694  
 WWW.LWDD.NET



**CANAL REHABILITATION PROJECT**

**E-1WN CANAL RIGHT-OF-WAY  
 L-30W CANAL TO L-36½W CANAL**

LWDD PROJECT No:  
**16-10063P01**

SHEET **3** OF **3**

Q:\640\CAD\_projects\10063p01-E1WN\_L36W\_L30W\16-10063p01-E1WN\_L30W\_L36.5W.dwg 7/31/2017 9:03 AM