



REVISIONS:		DRAWING INFORMATION:	
Nr:	DATE:	DESCRIPTION:	BY:

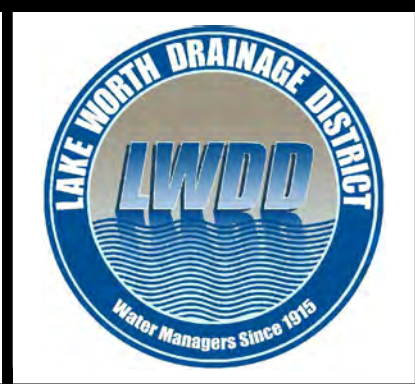
DATE:	7/28/2016
SCALE:	1" = 40'
DRAWN BY:	K.SMITH
CHECKED BY:	K. SMITH
CAD FILE:	09897P04-E4_L19_HYPOLUXO
AERIAL DATE:	2015

NOTE:
 MAPS WERE COMPILED USING PALM BEACH COUNTY GIS GEOGRAPHIC DATA, SURVEYS, DEEDS, PLATS, PLANIMETRIC MAPS, AND OTHER PUBLIC DOMAIN RECORDS. WHILE EVERY EFFORT HAS BEEN MADE TO PRESERVE THE INTEGRITY OF THE DATA, THE ACCURACY VARIES AND SHOULD NOT BE RELIED UPON FOR ANYTHING OTHER THAN REFERENCE.

MAP DISCLAIMER:
 LAKE WORTH DRAINAGE DISTRICT MAKES NO WARRANTIES AND/OR REPRESENTATIONS WITH RESPECT TO SUCH INFORMATION AND FURTHER EXPRESSLY DISCLAIMS ANY AND ALL WARRANTIES AND/OR REPRESENTATIONS REGARDING THE USABILITY, ACCURACY, COMPLETENESS, VALIDITY AND RELIABILITY OF SUCH INFORMATION.

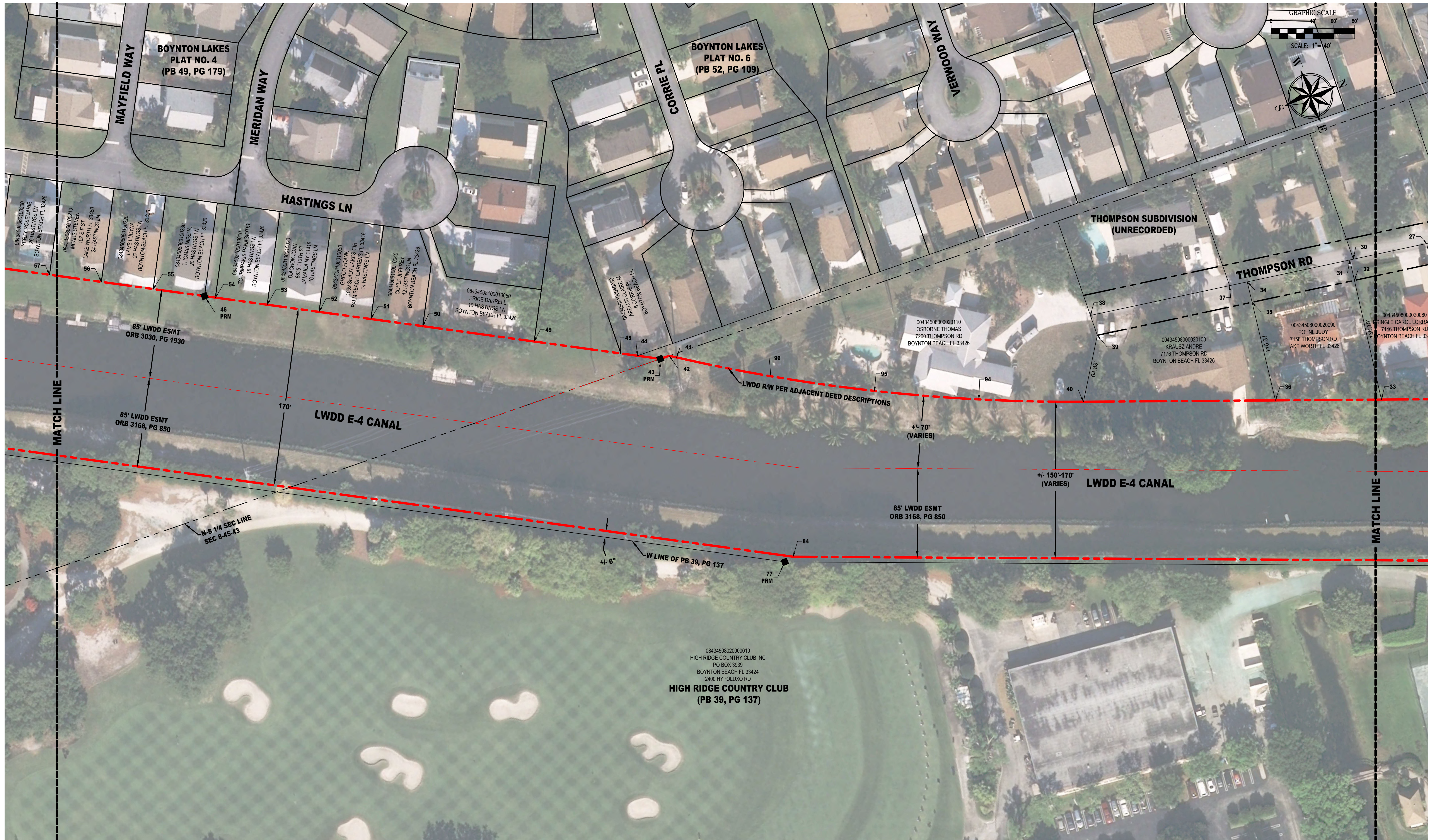
THESE MAPS ARE FOR INFORMATIONAL PURPOSES ONLY AND DOES NOT REPRESENT A SURVEY

LAKE WORTH DRAINAGE DISTRICT
 13081 MILITARY TRAIL
 DELRAY BEACH, FLORIDA 33484-1105
 PHONE (561) 498-5363 • FAX (561) 495-9694
 WWW.LWDD.NET



CANAL REHABILITATION PROJECT
 E-4 CANAL RIGHT-OF-WAY
 L-19 CANAL TO HYPOLUXO RD

SHEET
1
 OF: **3**
 LWDD PROJECT Nr:
16-9897P04



REVISIONS:		DRAWING INFORMATION:	
Nr:	DATE:	DESCRIPTION:	BY:

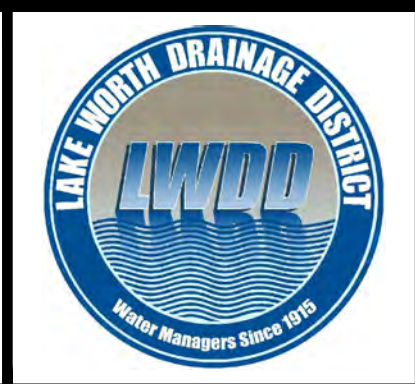
DATE:	7/26/2016
SCALE:	1" = 40'
DRAWN BY:	K. SMITH
CHECKED BY:	K. SMITH
CAD FILE:	09897P04-E4-L19_Hypoluxo.dwg
AERIAL DATE:	2015

NOTE:
 MAPS WERE COMPILED USING PALM BEACH COUNTY GIS GEOGRAPHIC DATA, SURVEYS, DEEDS, PLATS, PLANIMETRIC MAPS, AND OTHER PUBLIC DOMAIN RECORDS. WHILE EVERY EFFORT HAS BEEN MADE TO PRESERVE THE INTEGRITY OF THE DATA, THE ACCURACY VARIES AND SHOULD NOT BE RELIED UPON FOR ANYTHING OTHER THAN REFERENCE.

MAP DISCLAIMER:
 LAKE WORTH DRAINAGE DISTRICT MAKES NO WARRANTIES AND/OR REPRESENTATIONS WITH RESPECT TO SUCH INFORMATION AND FURTHER EXPRESSLY DISCLAIMS ANY AND ALL WARRANTIES AND/OR REPRESENTATIONS REGARDING THE USABILITY, ACCURACY, COMPLETENESS, VALIDITY AND RELIABILITY OF SUCH INFORMATION.

THESE MAPS ARE FOR INFORMATIONAL PURPOSES ONLY AND DOES NOT REPRESENT A SURVEY

LAKE WORTH DRAINAGE DISTRICT
 13081 MILITARY TRAIL
 DELRAY BEACH, FLORIDA 33484-1105
 PHONE (561) 498-5363 • FAX (561) 495-9694
 WWW.LWDD.NET



CANAL REHABILITATION PROJECT

E-4 CANAL RIGHT-OF-WAY
 L-19 CANAL TO HYPOLUXO RD

LWDD PROJECT No:
16-9897P04

SHEET **2** OF **3**



REVISIONS:		DRAWING INFORMATION:	
No.	DATE:	DESCRIPTION:	BY:

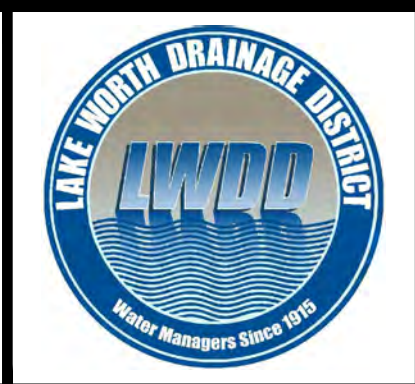
DATE:	7/26/2016
SCALE:	1" = 40'
DRAWN BY:	K.SMITH
CHECKED BY:	K. SMITH
CAD FILE:	09897P04-E4_L19_Hypoluxo\09897p04-E4_L19_Hypoluxo.dwg
AERIAL DATE:	2015

NOTE:
 MAPS WERE COMPILED USING PALM BEACH COUNTY GIS GEOGRAPHIC DATA, SURVEYS, DEEDS, PLATS, PLANIMETRIC MAPS, AND OTHER PUBLIC DOMAIN RECORDS. WHILE EVERY EFFORT HAS BEEN MADE TO PRESERVE THE INTEGRITY OF THE DATA, THE ACCURACY VARIES AND SHOULD NOT BE RELIED UPON FOR ANYTHING OTHER THAN REFERENCE.

MAP DISCLAIMER:
 LAKE WORTH DRAINAGE DISTRICT MAKES NO WARRANTIES AND/OR REPRESENTATIONS WITH RESPECT TO SUCH INFORMATION AND FURTHER EXPRESSLY DISCLAIMS ANY AND ALL WARRANTIES AND/OR REPRESENTATIONS REGARDING THE USABILITY, ACCURACY, COMPLETENESS, VALIDITY AND RELIABILITY OF SUCH INFORMATION.

THESE MAPS ARE FOR INFORMATIONAL PURPOSES ONLY AND DOES NOT REPRESENT A SURVEY

LAKE WORTH DRAINAGE DISTRICT
 13081 MILITARY TRAIL
 DELRAY BEACH, FLORIDA 33484-1105
 PHONE (561) 498-5363 • FAX (561) 495-9694
 WWW.LWDD.NET



CANAL REHABILITATION PROJECT

E-4 CANAL RIGHT-OF-WAY
 L-19 CANAL TO HYPOLUXO RD

SHEET **3**
 OF: **3**

LWDD PROJECT No:
16-9897P04